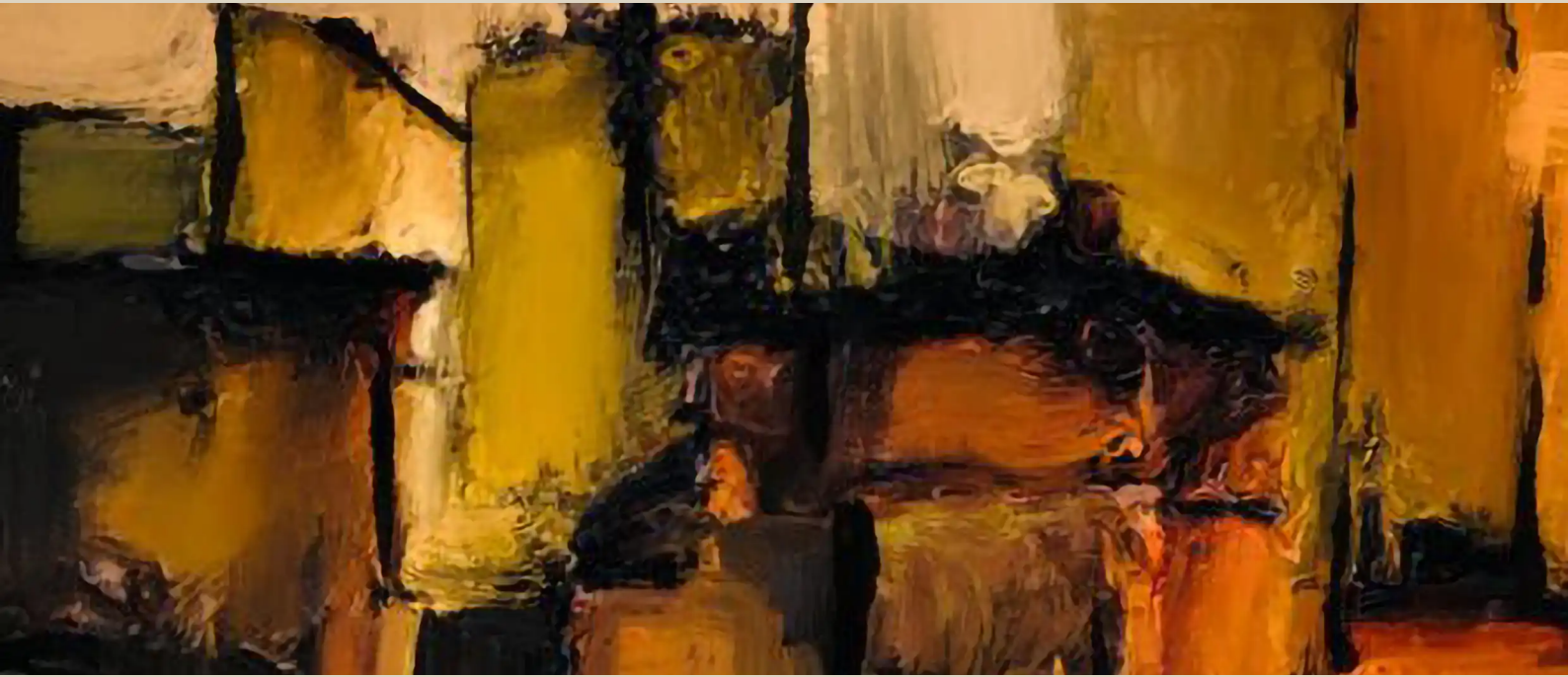


COLLECTION

City of Lights, Shadows of Thoughts



Arnaud Quercy

16 works

Art Quam Anima Publishing

City of Lights, Shadows of Thoughts

Arnaud Quercy

Paris is the city I call home, and yet, it never ceases to surprise. Beneath its grand façades and iconic landmarks lies a world of contrasts—a place where life unfolds in quiet pauses and sudden bursts, in light that illuminates and shadows that conceal. This collection is my invitation to experience a side of Paris that whispers rather than shouts, a place where stillness and motion, introspection and dynamism, coexist in delicate balance.

In *The Lady at the Café* (Gouache on Paper, 2023), I explore a quintessentially Parisian moment: the quiet solitude of a café. She sits with her thoughts, coffee in hand, as the city hums around her. There is something timeless in this scene, a suspension of time and space that only Paris can offer. In contrast, *Parisian Thoroughfare* (Acrylic on Paper, 2022) captures the city's pulse—the bustling streets, the layered architecture, and the organized chaos of a metropolis in perpetual motion.

Yet, there is an intimacy in Paris, a personal space carved within its crowded landscape. *The Girl on the Bus* (Charcoal on Paper, 2022) offers a glimpse into this solitary reflection, where one can feel utterly alone amidst the city's rhythm. For a moment, the world is reduced to that quiet gaze out the window, a single frame of solitude within the expanse of urban life.

Paris also offers spaces for pause, where life breathes gently. In *Reader of Parc Monceau* (Oil on Canvas, 2024), a figure sits alone, enveloped in the serenity of green—a refuge from the city's relentless pace. These quieter corners, hidden among the trees and tucked away from the boulevards, hold Paris' soul as much as its bustling streets.

There is a playful, whimsical Paris as well, found in places where joy fills the air. *Playgrounds - Jardin d'Acclimatation* (Watercolor, 2024) captures this energy, blending careful brushstrokes with spontaneous movement, evoking laughter and liveliness. These green spaces offer more than just scenery—they are breaths of fresh air, playful escapes from the city's intensity.

Promenade aux jardins du Luxembourg (Acrylic and Watercolor, 2024) takes us through a deeply personal journey, revisiting a familiar place that changes with the seasons, the light, and perhaps even one's mood. These scenes capture the gardens in their many moods, from the warmth of a summer afternoon to the cool quiet of autumn. In each piece, the shifting light reveals a new side, a reminder of the endless variety within the familiar.

With *City of Lights, Shadows of Thoughts*, my hope is to share Paris as a living entity, an experience more than a place. Its light brings clarity, while its shadows invite reflection. Here, every street corner and quiet bench holds potential for revelation. Through these works, I hope to convey not just Paris' visual allure but also the thoughts, the emotions, and the quiet realizations that it stirs within those who call it home.

Flâneries Parisiennes

Flâneries Parisiennes is a series of eight works spanning four years, four media, and a range of scales — from a 10 × 15 cm watercolor sketch to a 30 × 40 cm composed canvas. What holds them together is not a single site or a single moment but a mode of attention: the wandering gaze, the figure caught mid-street, the café, the neighborhood, the game of light on stone.

The series moves between the anonymous and the particular. The neighbourhood (AQC0434, watercolor, 30 × 40 cm, 2022) is the largest work and the most architectural — warm orange dominates, structured into interlocking geometric forms, with a deep blue counterpoint that reads as distance, as depth, as the presence of sky between buildings. It is a neighborhood as system rather than scene.

The lady at the café, Paris (AQC0417, gouache, 21 × 30 cm, 2023) inverts this: the architecture recedes, and what remains is a figure held in a warm amber-orange field, the gouache medium allowing both opacity and translucency within a single surface, dark violet and

gray anchoring the composition against the warmth. The Stone Cutter (AQC0430, watercolor, 21 × 30 cm, 2023) shifts palette entirely — the dominant register is gray, cool and mineral, with blue-green accents and a grid of small rectangular forms at the base that make visible the logic of craft itself, of stone worked into order.

Across the series, media are not interchangeable. Gouache holds the café scene's opacity and social weight. Watercolor releases the neighborhood and the street into something more permeable, more atmospheric. Oil absorbs the garden reader into a darker gravity. The medium participates in the subject.

The series has shown extensively — from Koblenz to Saint-Germain-en-Laye, from Montparnasse to the Halle des Blancs Manteaux — and continues to circulate at Art Quam Anima. Four works have found collectors in France, São Paulo, Italy, and Los Angeles. Four remain available.

Arnaud Quercy Creations / AQC0434 / 2022

The neighbourhood

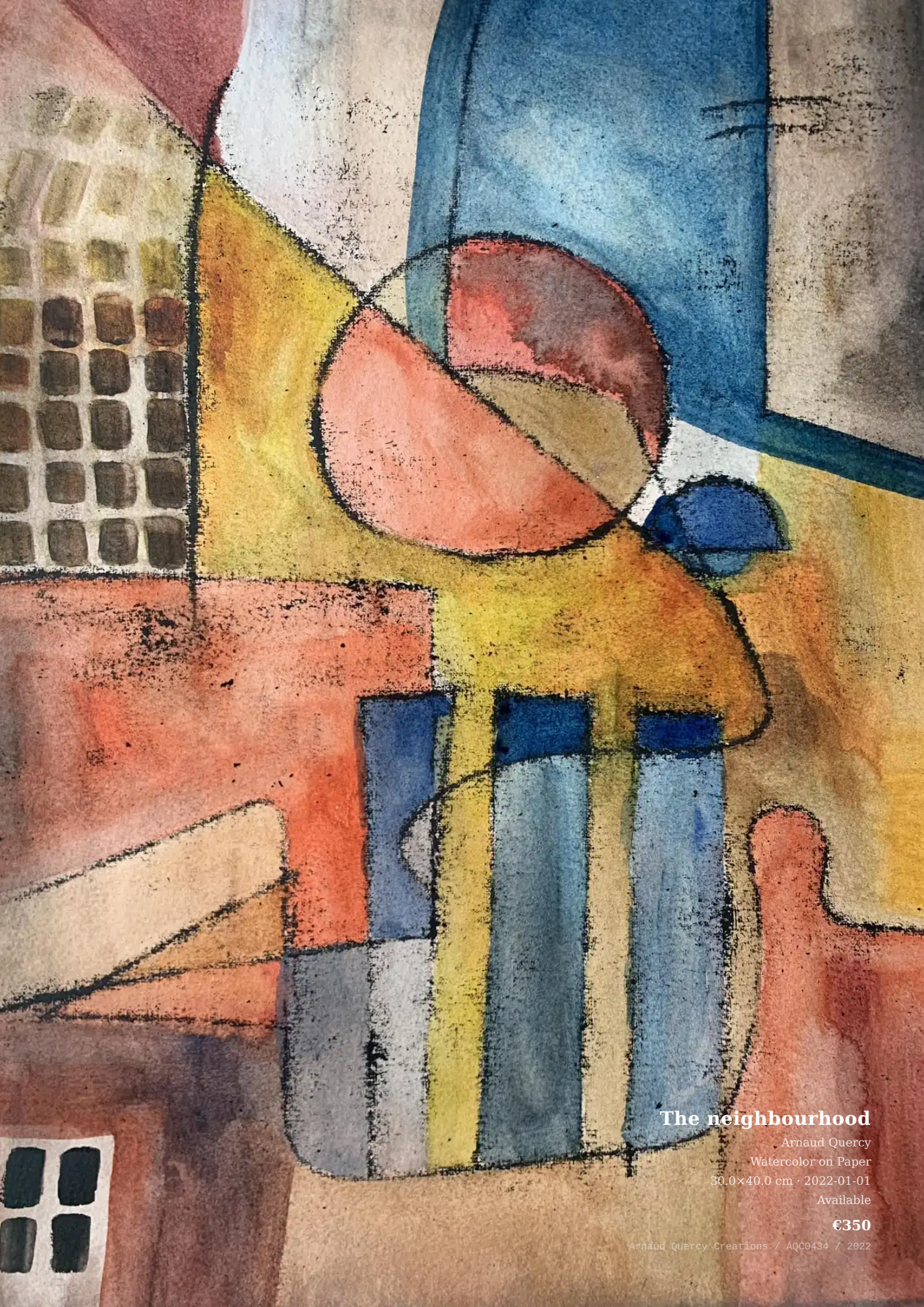
Watercolor on Paper · 30.0×40.0 cm · 2022-01-01 · Available

This abstract composition explores community and structure through dynamic geometric forms and architectural elements. Part of the "City of Lights, Shadows of Thoughts" collection, the work examines how individual spaces connect to form larger environments. The piece presents a neighborhood as an interconnected system of shapes, colors, and boundaries.

Orange tones dominate the composition, creating warmth throughout the surface. Blue accents provide cool counterpoints in vertical and circular elements. The watercolor technique allows colors to blend and separate naturally, with crisp geometric boundaries defining distinct areas. Grid patterns appear in upper sections, suggesting windows or urban infrastructure, while curved forms create organic contrast against angular structures.

The work measures 30.0 × 40.0 cm on paper, making it suitable for intimate viewing spaces. Certificate of authenticity number 20231231-0020 accompanies the piece. The artist's signature appears on the back. Created in 2022, this watercolor demonstrates controlled color relationships within a structured compositional framework.

Where neighborhood becomes abstract geometry — community made visible through color



The neighbourhood

Arnaud Quercy

Watercolor on Paper

30.0×40.0 cm · 2022-01-01

Available

€350

Arnaud Quercy Creations / AQC0434 / 2022

Arnaud Quercy Creations / AQC0307 / 2021

Memories of the Rue des Rosiers - Paris

UV Print on gessoed paper on marouflage on medium wood panel · 21.0×30.0 cm · 2021-01-01 · Sold

This work explores the architectural character of Paris's historic Rue des Rosiers through a contemporary digital painting approach. Part of the Untamed Creations collection, it captures the layered urban landscape of one of the city's most culturally significant streets. The piece examines how memory transforms architectural details into expressive color relationships.

Black areas anchor the composition, creating structural foundations that support warm orange and burnt sienna tones throughout the surface. These earth tones build the main architectural forms, while lighter sandybrown areas provide illuminated surfaces. Very dark grays establish intermediate shadows, connecting the deepest blacks to the warmer building masses. Small yellow-orange accents appear as bright highlights, suggesting windows or reflected light on building surfaces.

The work measures 21 × 30 cm and uses UV print technology on gessoed paper, mounted on medium wood panel. This printing method allows precise color reproduction while maintaining the painterly qualities of the original digital work. The piece carries certificate number 20211231-0114 and represents Quercy's exploration of new printing techniques discovered through collaboration with a Parisian printing company. The work was gifted to the artist's sister Sylvia Herbez in 2022.

Where Parisian architectural memory becomes contemporary digital art



Memories of the Rue des Rosiers - Paris

Arnaud Quercy

UV Print on gessoed paper on marouflage on medium wood panel

21.0×30.0 cm · 2021-01-01

Sold

Arnaud Quercy Creations / AQC0307 / 2021

Arnaud Quercy Creations / AQC0417 / 2023

The lady at the café, Paris

Gouache on Paper · 21.0×30.0 cm · 2023-01-01 · Sold — Sao Paulo, Brazil

This expressive gouache painting explores the essence of Parisian café culture through bold abstraction and vibrant color relationships. Part of the "City of Lights, Shadows of Thoughts" collection, the work captures the energy and intimacy of urban social spaces through fragmented forms and gestural marks. Quercy transforms the familiar scene of a café patron into a dynamic composition that emphasizes emotional presence over literal representation.

Orange tones dominate the composition, creating warmth that fills most areas of the surface. Deep burgundy and chocolate browns provide substantial presence throughout the middle ground, while dark gray-violet forms anchor the composition with strong vertical and horizontal elements. Yellow-green accents appear in strategic locations, offering chromatic contrast against the warm palette. The gouache medium allows for both transparent washes and opaque passages, creating varied surface textures that enhance the work's expressive quality.

The painting measures 21 × 30 cm and weighs minimal amounts appropriate for paper support. Created in 2023, this work represents Quercy's contemporary approach to figurative abstraction within the French artistic tradition. The piece carries certificate of authenticity number 20231231-0004 and bears the artist's signature on the back. The work was sold in September 2024 to a private collector in São Paulo, Brazil, demonstrating its international appeal and the artist's growing recognition in global art markets.

Where café conversations become color — Paris transformed into pure expression



The lady at the café, Paris

Arnaud Quercy

Gouache on Paper

21.0×30.0 cm · 2023-01-01

Sold — Sao Paulo, Brazil

Arnaud Quercy Creations / AQC0417 / 2023

Arnaud Quercy Creations / AQC0425 / 2023

The handbells player

Watercolor on Paper · 21.0×30.0 cm · 2023-01-01 · Not for sale

This watercolor explores the visual translation of handbell music through abstract geometric forms and layered color relationships. Part of the Untamed Creations collection, the work transforms musical rhythm and harmony into a composition that balances structured elements with fluid watercolor techniques. The piece investigates how sound can find expression through color and form.

Warm yellow-orange tones dominate the composition, creating a foundation that spans most of the surface. Blue elements provide substantial counterpoint, appearing in both muted gray-blues and clearer steel tones. The geometric forms include vertical rectangles, circular shapes, and angular elements that intersect through black linear marks. Small accent colors in red, green, and darker tones punctuate specific areas. The watercolor medium allows colors to blend at edges while maintaining distinct geometric boundaries in other areas.

The work measures 21 × 30 cm on paper and weighs minimal as an unframed watercolor. Certificate of authenticity number 20231231-0012 accompanies the piece, with the artist's signature located on the back. This medium-format work demonstrates watercolor's capacity for both precise geometric definition and organic color interaction. The piece represents a contemporary approach to musical visualization through abstract painting.

Where handbell music becomes visible through watercolor geometry



The handbells player

Arnaud Quercy

Watercolor on Paper

21.0×30.0 cm · 2023-01-01

Not for sale

Arnaud Quercy Creations / AQC0425 / 2023

Arnaud Quercy Creations / AQC0430 / 2023

The Stone Cutter

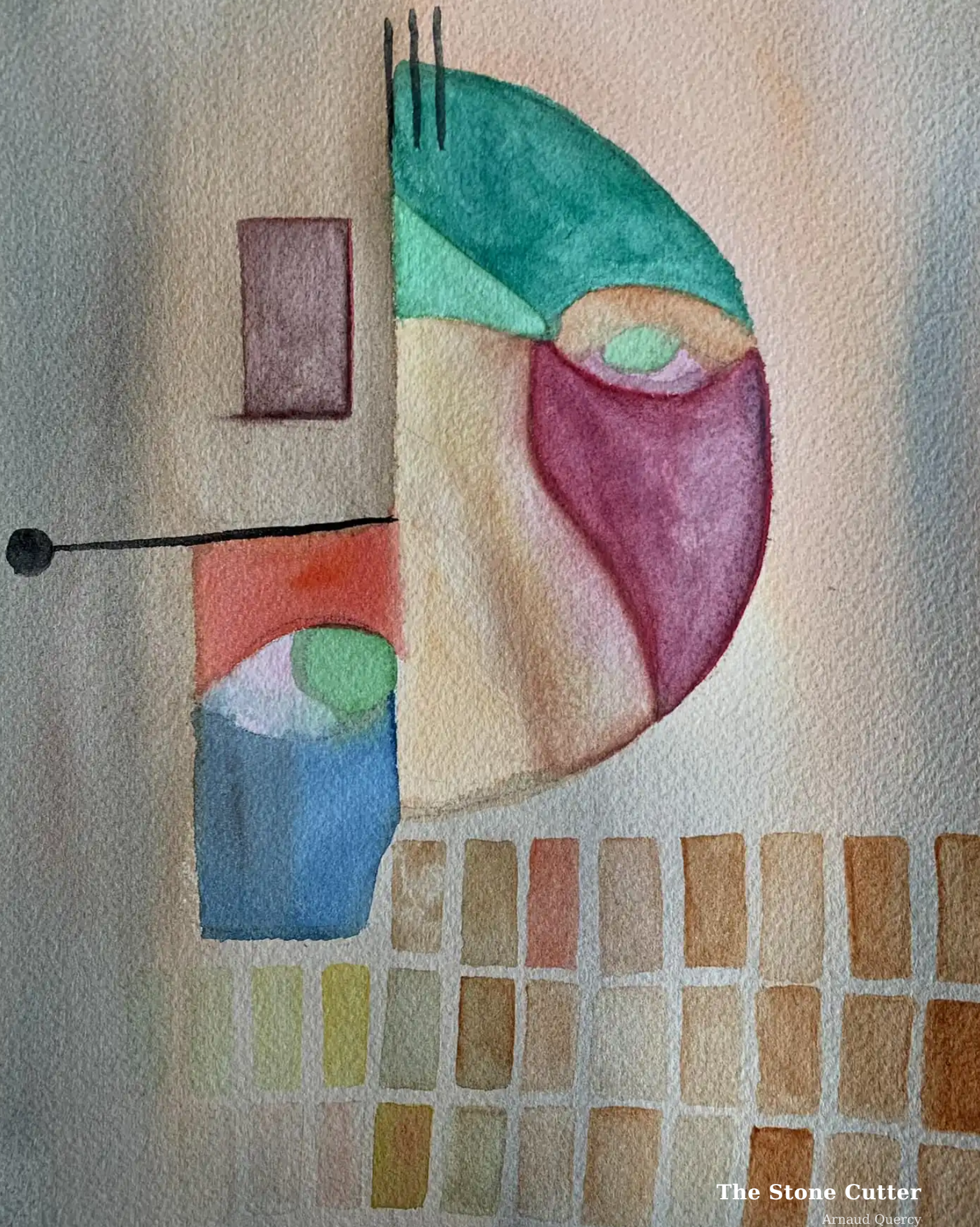
Watercolor on Paper · 21.0×30.0 cm · 2023-01-01 · Not for sale

This watercolor explores the intersection of geometric abstraction and organic form through a composition that balances structured elements with fluid color transitions. Part of the "City of Lights, Shadows of Thoughts" collection, the work examines how architectural thinking can inform artistic expression while maintaining the spontaneous qualities inherent to watercolor painting.

The composition centers on neutral gray tones that occupy more than half the surface, creating a foundation for carefully placed color accents. Warm red-orange areas provide substantial presence in the lower portion, while blue-green elements appear as focused details that draw the eye through the composition. A grid of small rectangular forms anchors the lower section, contrasting with the larger curved and angular shapes that dominate the upper areas. The watercolor technique allows colors to blend naturally at their edges while maintaining distinct boundaries where precision serves the overall structure.

The work measures 21.0 × 30.0 cm on paper, positioning it as a medium-scale piece suitable for intimate viewing. Created in 2023, it carries certificate of authenticity number 20230607-0016 and bears the artist's signature on the back. The piece demonstrates Quercy's approach to combining architectural sensibility with the fluid properties of watercolor, resulting in a composition that feels both planned and spontaneous.

Where architectural precision meets watercolor spontaneity in perfect harmony



The Stone Cutter

Arnaud Quercy

Watercolor on Paper

21.0×30.0 cm · 2023-01-01

Not for sale

Arnaud Quercy Creations / AQC0430 / 2023

Arnaud Quercy Creations / AQC0579 / 2024

Reader Of Parc Monceau, Paris

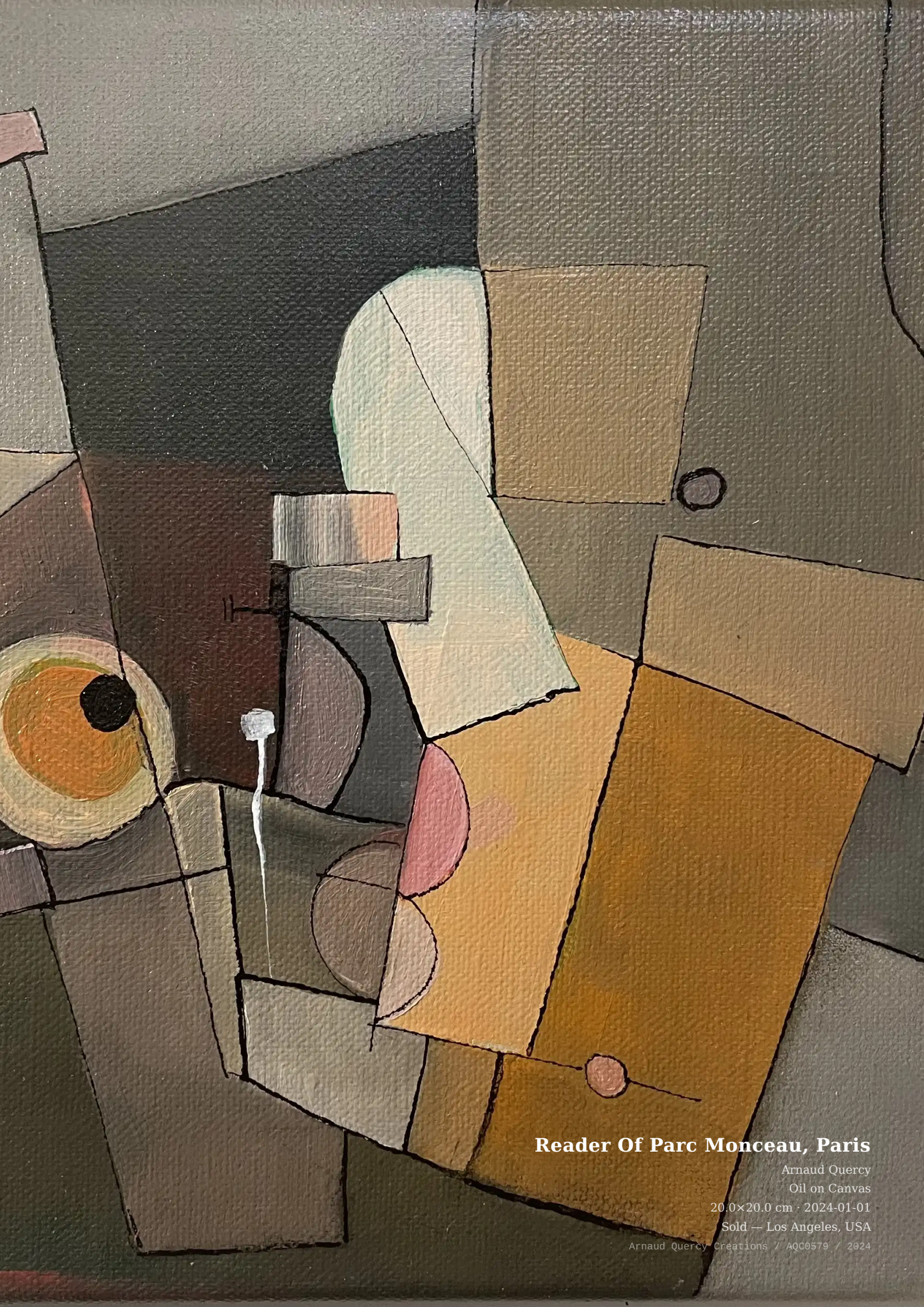
Oil on Canvas · 20.0×20.0 cm · 2024-01-01 · Sold — Los Angeles, USA

Reader of Parc Monceau explores the intersection of solitary contemplation and urban space through abstract Cubist interpretation. Part of the City of Lights, Shadows of Thoughts collection, the work examines how private moments of reflection exist within public Parisian landscapes. The painting questions the relationship between interior experience and external environment.

The composition centers on warm yellow-orange tones that dominate the surface, creating a unified harmonic foundation. Darker brown and gray elements provide structural contrast, while geometric forms fragment and reassemble the reading figure. A subtle salmon-pink accent appears as a small but vital color note. The oil paint creates smooth transitions between overlapping planes, with geometric shapes suggesting both architectural elements and human form in fragmented unity.

This compact work measures 20 × 20 cm and weighs minimal for display flexibility. The oil on canvas technique allows for precise color relationships within the intimate scale. Certificate of authenticity number 20240514-0075 documents the work's provenance, with the artist's signature positioned on the front right. The piece represents a focused study within Quercy's ongoing exploration of Parisian urban psychology.

Where Parisian solitude becomes geometric poetry in warm urban tones



Reader Of Parc Monceau, Paris

Arnaud Quercy

Oil on Canvas

20.0×20.0 cm · 2024-01-01

Sold — Los Angeles, USA

Arnaud Quercy Creations / AQC0579 / 2024

FLÂNERIES PARISIENNES

**Memories of the Rue des Rosiers - Paris**

UV Print on gessoed paper on marouflage on medium wood panel
21.0×30.0 cm · 2021-01-01

Sold

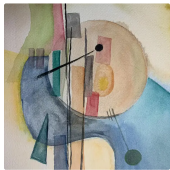
AQC0307

**The lady at the café, Paris**

Gouache on Paper
21.0×30.0 cm · 2023-01-01

Sold — Sao Paulo, Brazil

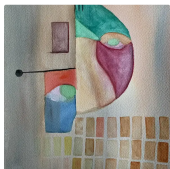
AQC0417

**The handbells player**

Watercolor on Paper
21.0×30.0 cm · 2023-01-01

Not for sale

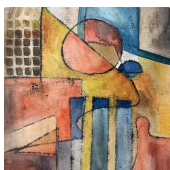
AQC0425

**The Stone Cutter**

Watercolor on Paper
21.0×30.0 cm · 2023-01-01

Not for sale

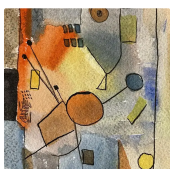
AQC0430

**The neighbourhood**

Watercolor on Paper
30.0×40.0 cm · 2022-01-01

Available

AQC0434

**Playgrounds**

Watercolor on Paper
10.0×15.0 cm · 2024-01-01

Sold — Italy

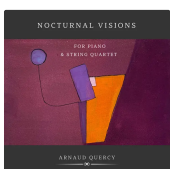
AQC0515

**Reader Of Parc Monceau, Paris**

Oil on Canvas
20.0×20.0 cm · 2024-01-01

Sold — Los Angeles, USA

AQC0579

**Nocturnal Visions**

Music on Music
2024-01-01

Not for sale

AQC0708



The Gardens

The Gardens is a series of eight small-format works on paper — acrylic and watercolor — all produced in 2024. The site is consistent: the Jardin du Luxembourg, and a bench at the edge of it. The format is not.

At 10 × 15 cm for the acrylics and 12 × 16 cm for the watercolors, these works resist the monumental. They hold the scale of direct observation, of something noted on the spot rather than composed after the fact. What changes across the series is not the place but the light — or more precisely, the chromatic logic that light imposes on form.

The acrylic works anchor the series. *Promenade aux jardins du Luxembourg, l'été* (AQC0508) and *Pause déjeuner sur un banc* (AQC0510) are structured around warm, high-saturation fields — deep reds, burnt sienna, darkred, russet — organized into angular blocks that press against each other with deliberate weight. These are not descriptive paintings. The bench and the garden path do not appear as such; they are translated into color relationships and geometric boundaries that carry the heat and density of a Paris summer at midday.

The watercolor variations — *Promenade aux jardins du Luxembourg, Variations 3 through 6* (AQC0617–AQC0620) — shift the register entirely. Yellow-ocher

and burlywood open out to blue-gray structures; the palette lightens and breathes. Where the acrylics compress, the watercolors diffuse. The medium itself participates in the meaning: the fluid edges of the watercolor ground enact the quality of filtered afternoon light through garden canopies, in a way the acrylic's clean boundaries cannot.

Across both media, dark linear elements — olive and black — perform the work of architecture: they mark limits, define passages, create the sense of a space that is contained but not enclosed. This is a garden as urban interior, bounded by iron fences and stone balustrades, held within the city but separate from it.

All eight works are sold. Collectors in Paris, Issy-les-Moulineaux, Los Angeles, Henderson, and Italy. The series was shown at the Rencontres au Marché de la Création, the Salon d'art contemporain Metamorphose, and entered the Permanent Collection 2025 — Resonance in Form. The dispersal is itself a kind of diffraction: these small paintings now inhabit different lives, different walls, carrying the same afternoon in different rooms.

Arnaud Quercy Creations / AQC0617 / 2024

Promenade aux jardins du Luxembourg - Variation 3

Watercolor on Paper · 12.0×16.0 cm · 2024-01-01 · Sold — Paris, France

This watercolor explores the interplay between architectural and natural forms through abstract geometric shapes. Part of the "City of Lights, Shadows of Thoughts" collection, the work translates the experience of walking through Luxembourg Gardens into a visual composition of intersecting forms and muted color relationships.

Warm yellow-orange tones dominate the composition, creating a foundation of light that suggests filtered sunlight through garden spaces. Blue-gray forms provide structural contrast, appearing as vertical and circular elements that anchor the composition. Dark olive and black linear elements define boundaries and create rhythmic connections between shapes, while small accent notes of burnt sienna and aquamarine add punctuation throughout the surface.

The work measures 12.0 × 16.0 cm and weighs minimal as a watercolor on paper. This piece holds certificate of authenticity number 20240615-0113 and bears the artist's signature in the bottom right corner. The compact format allows the geometric abstraction to read clearly while maintaining the fluid qualities inherent to watercolor technique.

Where garden walks become geometric poetry in watercolor



Promenade aux jardins du Luxembourg - Variation 3

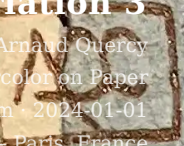
Arnaud Quercy

Watercolor on Paper

12.0x16.0 cm - 2024-01-01

Sold - Paris, France

Arnaud Quercy Creations / AQCC017 / 2024



Arnaud Quercy Creations / AQC0618 / 2024

Promenade aux jardins du Luxembourg - Variation 4

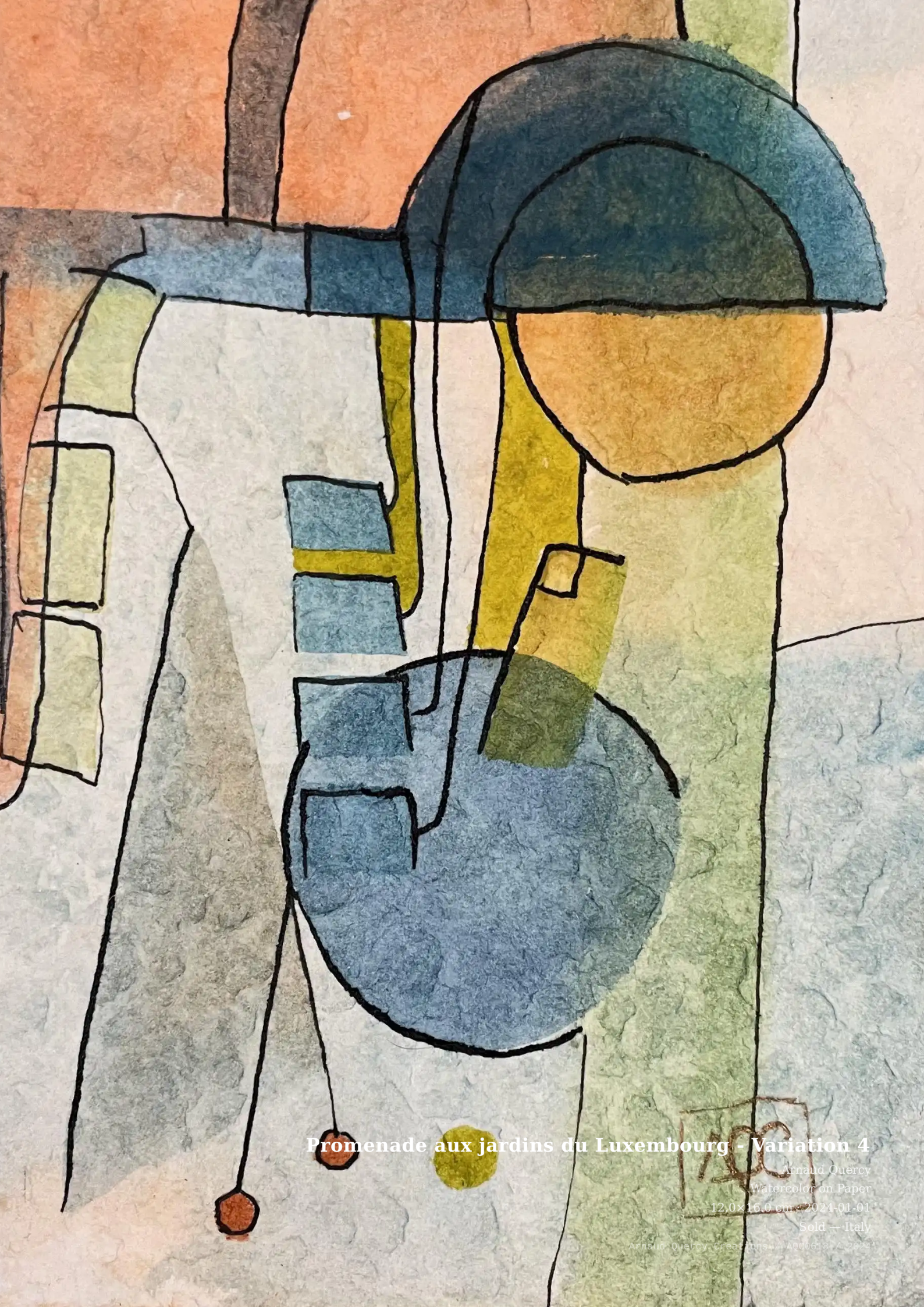
Watercolor on Paper · 12.0×16.0 cm · 2024-01-01 · Sold — Italy

This watercolor explores the intersection of architectural forms and natural spaces through abstract geometric interpretation. Part of the "City of Lights, Shadows of Thoughts" collection, the work translates the experience of walking through Luxembourg Gardens into a visual language of overlapping shapes and muted color relationships.

Light gray tones dominate the composition, creating a foundation across which warmer yellow-orange areas provide structural emphasis. Blue-gray circular forms anchor the upper and lower portions of the piece, while orange accents appear in concentrated areas that suggest architectural details or filtered sunlight. The interplay between geometric boundaries and organic color transitions reflects the formal garden's balance of designed structure and natural growth.

The work measures 12.0 × 16.0 cm on paper, signed bottom right, and carries certificate of authenticity number 20240615-0114. This compact format concentrates the visual elements into an intimate viewing experience that emphasizes the subtle relationships between the layered forms and the textural qualities of the watercolor medium.

Where garden walks become geometric poetry in watercolor



Promenade aux jardins du Luxembourg - Variation 4

AQ
Arnaud Quercy
Watercolor on Paper
12,0x16,0 cm - 2024-01-01

Sold — Italy

Arnaud Quercy Creations - A006618 / 2024

Arnaud Quercy Creations / AQC0619 / 2024

Promenade aux jardins du Luxembourg - Variation 5

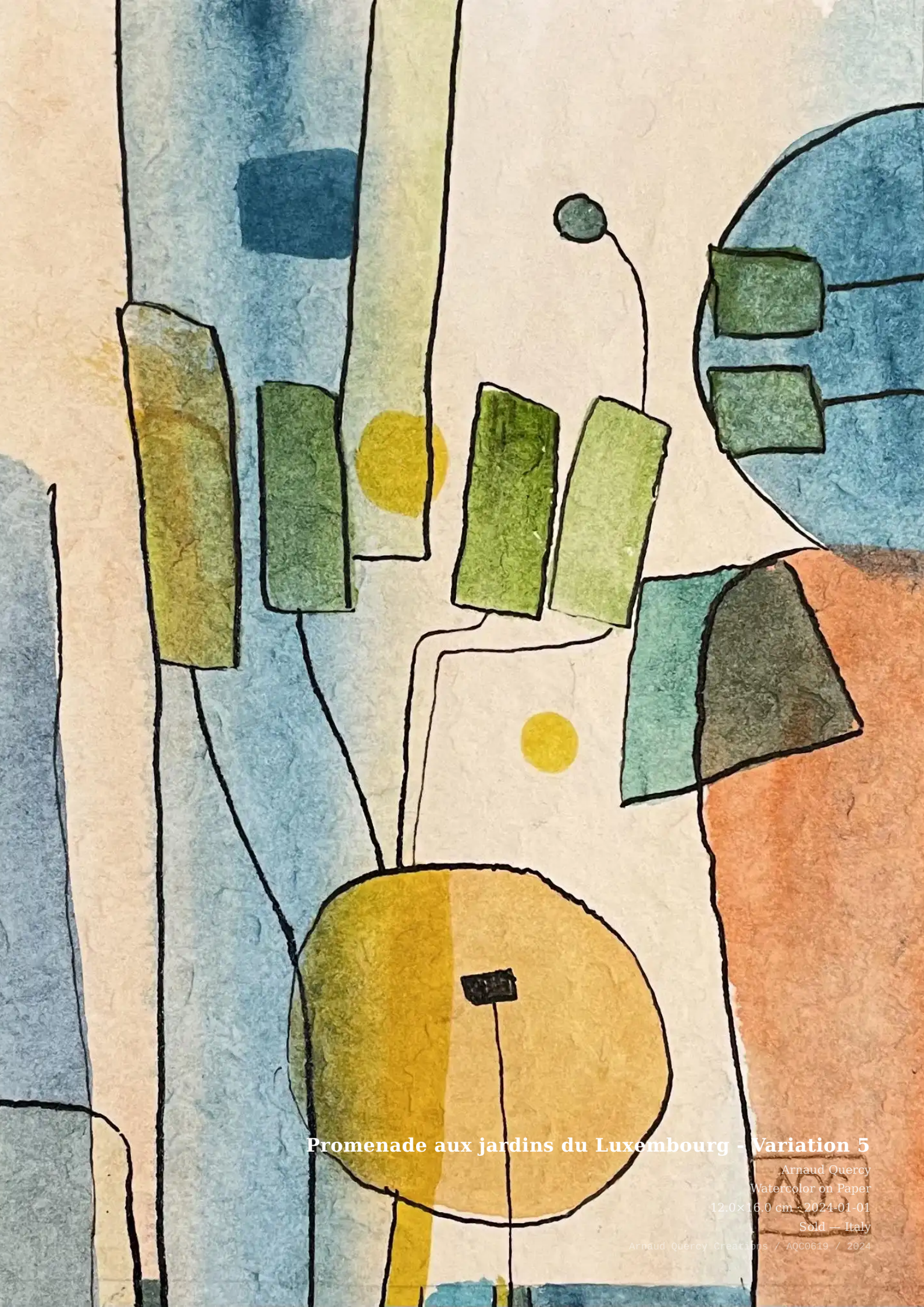
Watercolor on Paper · 12.0×16.0 cm · 2024-01-01 · Sold — Italy

This watercolor explores the visual language of urban gardens through abstract forms and architectural fragments. Part of the City of Lights, Shadows of Thoughts collection, the work captures the essence of strolling through Luxembourg Gardens without literal representation. The composition suggests the interplay between natural and built environments that defines Parisian public spaces.

Warm bisque and wheat tones dominate the surface, creating a luminous foundation that recalls sun-dappled pathways. Orange accents provide vibrant counterpoints while blue-green areas suggest shadows and foliage. Geometric shapes in yellow-green and darker tones anchor the composition, their angular forms contrasting with softer washes. The watercolor technique allows colors to flow and blend naturally, creating organic transitions between defined areas. Black linear elements provide structure and definition throughout the piece.

The work measures 12.0 × 16.0 cm on paper, making it an intimate study in the artist's exploration of urban landscape abstraction. Created in 2024 in France, this piece carries certificate of authenticity number 20240615-0115. The artist's signature appears in the bottom right corner. As part of the City of Lights, Shadows of Thoughts collection, it represents Quercy's ongoing investigation into the emotional geography of familiar places.

Where garden strolls become pure color and form



Promenade aux jardins du Luxembourg - Variation 5

Arnaud Quercy
Watercolor on Paper

12.0 x 16.0 cm - 2024-01-01

Sold - Italy

Arnaud Quercy Creations / AQC0619 / 2024

Arnaud Quercy Creations / AQC0620 / 2024

Promenade aux jardins du Luxembourg - Variation 6

Watercolor on Paper · 12.0×16.0 cm · 2024-01-01 · Sold — Paris, France

This watercolor explores the intersection of architectural observation and abstract interpretation through geometric forms and organic color relationships. Part of the City of Lights, Shadows of Thoughts collection, the work transforms the experience of walking through Paris's Luxembourg Gardens into a visual language of circles, rectangles, and flowing color zones.

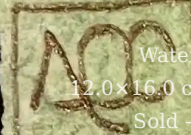
Light gray tones dominate the composition, creating an atmospheric foundation that suggests filtered daylight through garden spaces. Warm burlywood and ochre areas provide substantial color presence, while muted blue-green sections offer cooling counterpoints. The geometric elements—circular forms, vertical rectangles, and linear divisions—organize these color relationships into a structured yet fluid arrangement. Small accent notes in steelblue and dark olive green punctuate specific areas, creating focal points within the broader composition.

The work measures 12 × 16 cm on paper, maintaining the intimate scale characteristic of observational sketching while achieving the complexity of studio composition. Certificate of authenticity number 20240615-0116 accompanies the piece, with the artist's signature located at the bottom right. This variation represents one exploration within the broader collection examining urban garden experiences through abstract watercolor techniques.

Where garden walks become geometric poetry in watercolor



Promenade aux jardins du Luxembourg - Variation 6



Arnaud Quercy
Watercolor on Paper
12.0x16.0 cm - 2024-01-01
Sold - Paris, France

Arnaud Quercy - Editions - 2024-01-01 / 2024

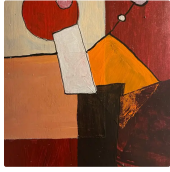
THE GARDENS

**Promenade aux jardins du Luxembourg, l'été**

Acrylic on Paper
10.0×15.0 cm · 2024-01-01
Sold — Paris, France
AQC0508

**Pause déjeuner sur un banc**

Acrylic on Paper
10.0×15.0 cm · 2024-01-01
Sold — Issy-les-Moulineaux, France
AQC0510

**Pause déjeuner sur un banc - Variation 1**

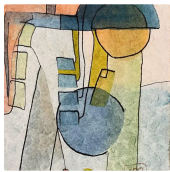
Acrylic on Paper
10.0×15.0 cm · 2024-01-01
Sold — Los Angeles, USA
AQC0516

**Promenade aux jardins du Luxembourg -variations d'été - Variation 2**

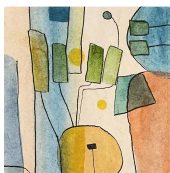
Acrylic on Paper
10.0×15.0 cm · 2024-01-01
Sold — Henderson, USA
AQC0518

**Promenade aux jardins du Luxembourg - Variation 3**

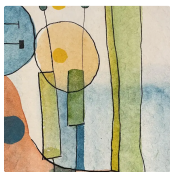
Watercolor on Paper
12.0×16.0 cm · 2024-01-01
Sold — Paris, France
AQC0617

**Promenade aux jardins du Luxembourg - Variation 4**

Watercolor on Paper
12.0×16.0 cm · 2024-01-01
Sold — Italy
AQC0618

**Promenade aux jardins du Luxembourg - Variation 5**

Watercolor on Paper
12.0×16.0 cm · 2024-01-01
Sold — Italy
AQC0619

**Promenade aux jardins du Luxembourg - Variation 6**

Watercolor on Paper
12.0×16.0 cm · 2024-01-01
Sold — Paris, France
AQC0620



RELATED PUBLICATIONS (48)

Aqc0307 Digital Image Documentation Aqc0307_Img_Full_2480X3508_Webp	AQC0307
Aqc0307 Physical Specifications	AQC0307
Aqc0307 Computational Image Analysis Aqc0307	AQC0307
Aqc0417 Digital Image Documentation Aqc0417_Img_Full_1536X2048_Webp	AQC0417
Aqc0417 Physical Specifications	AQC0417
Aqc0417 Computational Image Analysis Aqc0417	AQC0417
Aqc0425 Digital Image Documentation Aqc0425_Img_Full_1536X2048_Webp	AQC0425
Aqc0425 Physical Specifications	AQC0425
Aqc0425 Computational Image Analysis Aqc0425	AQC0425
Aqc0430 Digital Image Documentation Aqc0430_Img_Full_1536X2048_Webp	AQC0430
Aqc0430 Physical Specifications	AQC0430
Aqc0430 Computational Image Analysis Aqc0430	AQC0430
Aqc0434 Digital Image Documentation Aqc0434_Img_Full_1536X2048_Webp	AQC0434
Aqc0434 Physical Specifications	AQC0434
Aqc0434 Computational Image Analysis Aqc0434	AQC0434
Aqc0508 Digital Image Documentation Aqc0508_Img_Full_1638X2048_Webp	AQC0508
Aqc0508 Physical Specifications	AQC0508
Aqc0508 Computational Image Analysis Aqc0508	AQC0508
Aqc0510 Digital Image Documentation Aqc0510_Img_Full_843X1124_Webp	AQC0510
Aqc0510 Physical Specifications	AQC0510
Aqc0510 Computational Image Analysis Aqc0510	AQC0510
Aqc0515 Digital Image Documentation Aqc0515_Img_Full_1366X2048_Webp	AQC0515
Aqc0515 Physical Specifications	AQC0515
Aqc0515 Computational Image Analysis Aqc0515	AQC0515
Aqc0516 Digital Image Documentation Aqc0516_Img_Full_2031X2843_Webp	AQC0516
Aqc0516 Physical Specifications	AQC0516
Aqc0516 Computational Image Analysis Aqc0516	AQC0516
Aqc0518 Digital Image Documentation Aqc0518_Img_Full_2258X3236_Webp	AQC0518
Aqc0518 Physical Specifications	AQC0518
Aqc0518 Computational Image Analysis Aqc0518	AQC0518
Aqc0579 Digital Image Documentation Aqc0579_Img_Full_2727X2727_Webp	AQC0579
Aqc0579 Physical Specifications	AQC0579
Aqc0579 Computational Image Analysis Aqc0579	AQC0579
Aqc0617 Digital Image Documentation Aqc0617_Img_Full_2029X2705_Webp	AQC0617
Aqc0617 Physical Specifications	AQC0617
Aqc0617 Computational Image Analysis Aqc0617	AQC0617
Aqc0618 Digital Image Documentation Aqc0618_Img_Full_1935X2580_Webp	AQC0618
Aqc0618 Physical Specifications	AQC0618
Aqc0618 Computational Image Analysis Aqc0618	AQC0618
Aqc0619 Digital Image Documentation Aqc0619_Img_Full_1520X2027_Webp	AQC0619
Aqc0619 Physical Specifications	AQC0619
Aqc0619 Computational Image Analysis Aqc0619	AQC0619
Aqc0620 Digital Image Documentation Aqc0620_Img_Full_2229X2972_Webp	AQC0620
Aqc0620 Physical Specifications	AQC0620
Aqc0620 Computational Image Analysis Aqc0620	AQC0620
Aqc0708 Digital Image Documentation Aqc0708_Img_Full_1400X1400_Webp	AQC0708

Aqc0708 Physical Specifications	AQC0708
Aqc0708 Computational Image Analysis Aqc0708	AQC0708

© 2026 Arnaud Quercy

Published by: Art Quam Anima Publishing New York LLC

AQA PUBLISHING LLC

c/o Northwest Registered Agent, 418 Broadway, Ste N

Albany, New York, 12207

+1 917-764-5470

publishing.artquamanima.com

Last updated: 2026-04-09

Persistent URI: <https://publishing.artquamanima.com/en/catalogs/2025/10/city-of-lights-shadows-of-thoughts-6u.pdf>