

COLLECTION

# Spells and Magic



*Arnaud Quercy*

20 works

Art Quam Anima Publishing

# Spells and Magic

*Arnaud Quercy*

---

What is it about myths and magic that continues to captivate us, drawing us back to ancient tales in a world so devoted to logic? Perhaps it's the allure of the unknown, the thrill of entering realms where dragons roam and spells weave through the air. In *Spells and Magic*, I delve into this timeless fascination, capturing the places where the fantastical and the real meet. Can we truly separate reality from fantasy, or does imagination dissolve those boundaries?

The figure of the dragon, for instance, has haunted our legends, stirring awe and fear. In *Dragon* (Ceramic, 2024), I bring to life a creature born from shadow and fire—a being both fierce and majestic. But what is it that we see when we look at this dragon? Is it a guardian, a threat, or perhaps a mirror of our own desire for mystery and might? The sculpture's patina finish feels as if it has been weathered by time itself, inviting us to wonder: Are dragons merely the echoes of stories, or do they represent something we've long lost the ability to see?

Then there's *Dragon Breeder* (Ceramic, 2024), where a darker tale unfolds—a story of ambition intertwined with mythical power. Here, we see a figure bonded with a dragon, a creature not easily tamed. What drives someone to seek mastery over something so untamable? Is it a hunger for power, an attempt to conquer the wild, or an act of reverence for nature's fiercest forms? In this piece, the boundaries between who serves whom blur, raising questions about control, trust, and the fragile balance between man and myth. Does the dragon serve the breeder, or has the breeder unknowingly submitted to forces beyond his control?

Magic isn't confined to creatures alone. *Grimoire* (Ceramic, Rhodium Enamel, 2024) shifts our attention from mythical beings to the allure of knowledge. This is no ordinary book; it's a symbol, a gateway into the unknown, shaped in geometric forms—a cube, a prism, a circle. But what knowledge lies within? With its reflective rhodium enamel, the grimoire itself becomes mysterious, as though it guards secrets just out of reach. Knowledge, like magic, has its own power, but does it come with a cost? Can it be controlled, or is it a force that shapes us even as we attempt to master it?

At the heart of the *Grimoire* is a tension between the known and the unknown, the order of sharp edges and the mystery of smooth curves. This piece, like the dragons, embodies the duality of magic—a delicate balance between what is hidden and what is revealed. When we pursue knowledge, do we unlock a gift or invite danger? Is the quest for understanding the ultimate form of magic, or does it simply open doors that were better left closed?

In *Spells and Magic*, I invite you to linger in the spaces where reality mingles with legend, where imagination stretches the boundaries of the possible. The collection asks us to wonder: What lies beyond the stories we tell ourselves, and how much magic still lingers in the world we think we know? Here, dragons, grimoires, and the essence of myth come alive, nudging us to reflect on the mysteries we're drawn to, even in a world that insists on certainty.

## Dragon

---

Arnaud Quercy Creations / AQC0658 / 2024

## Dragon

Ceramic on Ceramic · 23.0×13.0 cm · 2024-01-01 · Available

Dragon explores mythological symbolism through contemporary ceramic sculpture, part of the Spells and Magic collection. This work examines the intersection between ancient dragon imagery and modern sculptural form. The piece transforms traditional ceramic techniques into a vehicle for fantasy and magical themes.

The sculpture presents cream and dark brown tones that create strong contrast across its angular surfaces. The ceramic material shows smooth textures on lighter areas while darker sections reveal rougher, more textured finishes. The form consists of curved and straight elements that interlock to suggest both architectural and organic qualities. The piece displays a distinctive triangular element that points downward, creating visual weight and structural emphasis.

Dragon measures twenty-three by thirteen by twenty-eight centimeters and weighs approximately one and six-tenths kilograms. The work carries certificate of authenticity number 20240705-0154 and bears the artist's signature below. This sculpture represents Quercy's contemporary approach within the broader Spells and Magic collection, which focuses on fantastical and mystical subjects rendered in ceramic.

*Where ancient dragon myths meet modern ceramic artistry in sculptural form.*



## Dragon

Arnaud Quercy

Ceramic on Ceramic

23.0×13.0 cm · 2024-01-01

Available

**€800**

Arnaud Quercy Creations / AQC0659 / 2024

## Dragon Breeder

Ceramic on Metal · 34.0×16.0 cm · 2024-01-01 · Sold — Frankfurt, Germany

Dragon Breeder explores mythological narrative through contemporary ceramic sculpture, forming part of the Spells and Magic collection. The work transforms the ancient archetype of dragon breeding into a tangible three-dimensional form that captures both the mystery and ambition of its legendary subject matter.

The sculpture presents a dynamic composition of geometric forms in warm earth tones. Angular ceramic elements rise vertically from a metal support base, creating sharp triangular planes that intersect and overlap. The fired clay surface displays subtle textural variations where the ceramic particles have fused during the firing process. The forms suggest both architectural precision and organic growth, with each angular segment positioned to create visual tension and movement.

The piece measures thirty-four by sixteen by twelve centimeters and weighs approximately one and four-tenths kilograms. The ceramic elements rest on a metal support that provides structural stability while maintaining the sculpture's visual lightness. Created in France during 2024, the work carries certificate of authenticity number 20240705-0155 and bears the artist's signature below the main sculptural elements.

*Where ancient dragon legends take geometric form in fired clay*



**Dragon Breeder**

Arnaud Quercy

Ceramic on Metal

34.0×16.0 cm · 2024-01-01

Sold — Frankfurt, Germany

Arnaud Quercy Creations / AQC0659 / 2024

Arnaud Quercy Creations / AQC0443 / 2023

## The Dragon Breeder - Variation 1

Oil on Canvas · 40.0×50.0 cm · 2023-01-01 · Available

This oil painting explores the intersection of mythological themes and contemporary abstract expression within the Spells and Magic collection. The work presents a dynamic composition where geometric forms and organic shapes create a visual narrative that suggests both architectural elements and fantastical creatures. The painting investigates how traditional storytelling motifs can be transformed through modern abstract language.

Warm earth tones dominate the composition, with tan and gray areas creating the foundational structure. Red-orange hues appear throughout substantial portions of the canvas, manifesting as russet, burnt sienna, and Indian red that build layers of visual depth. Dark red elements provide grounding weight, while a yellow-olive accent creates focal points within the warmer palette. The paint application shows varied texture, with some areas displaying smooth transitions and others revealing more gestural brushwork that adds tactile interest to the surface.

The work measures 40.0 × 50.0 cm and is executed in oil on canvas, making it part of the medium-scale format suitable for intimate viewing. Certificate of authenticity number 20231231-0029 documents the work's provenance, with the artist's signature appearing on the front of the canvas. As Variation 1 within the broader Spells and Magic collection, this piece establishes the thematic foundation for exploring how abstract visual language can evoke narrative content without literal representation.

*Where ancient dragon myths meet modern abstract expression*



**The Dragon Breeder - Variation 1**

Arnaud Quercy

Oil on Canvas

40.0×50.0 cm · 2023-01-01

Available

**€550**

Arnaud Quercy Creations / AQC0443 / 2023

A

Arnaud Quercy Creations / AQC0389 / 2022

## The Dragon Breeder

Charcoal on Paper · 21.0×29.5 cm · 2022-01-01 · Available

The Dragon Breeder explores the intersection of fantasy and geometric abstraction within Quercy's Spells and Magic collection. The work transforms mythological imagery into a contemporary visual language through fragmented forms and overlapping structures. The drawing investigates how traditional narrative subjects can be reimagined through modernist compositional strategies.

The composition organizes itself around interlocking geometric shapes rendered in charcoal's characteristic tonal range. Gray forms dominate the surface, creating depth through varied densities and textures. Circular elements intersect with angular fragments, establishing a dynamic relationship between curved and linear components. The charcoal medium allows for subtle gradations that soften the geometric divisions while maintaining structural clarity.

This work measures 21.0 × 29.5 cm on paper, positioning it within the artist's small-format drawing practice. The piece belongs to the Spells and Magic collection, which reinterprets fantastical themes through abstract visual approaches. The drawing bears the artist's signature on the front and carries certificate of authenticity number 20221231-0059, documenting its place within Quercy's 2022 production.

*Where dragons become geometry — fantasy reimagined through abstract form*



## **The Dragon Breeder**

Arnaud Quercy

Charcoal on Paper

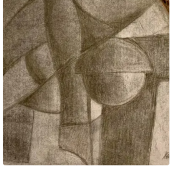
21.0×29.5 cm · 2022-01-01

Available

**€150**

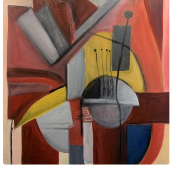
Arnaud Quercy Creations / AQC0389 / 2022

## DRAGON



### **The Dragon Breeder**

Charcoal on Paper  
21.0×29.5 cm · 2022-01-01  
Available  
AQC0389



### **The Dragon Breeder - Variation 1**

Oil on Canvas  
40.0×50.0 cm · 2023-01-01  
Available  
AQC0443



### **Dragon**

Ceramic on Ceramic  
23.0×13.0 cm · 2024-01-01  
Available  
AQC0658



### **Dragon Breeder**

Ceramic on Metal  
34.0×16.0 cm · 2024-01-01  
Sold — Frankfurt, Germany  
AQC0659



## Myths & Legends

---

Arnaud Quercy Creations / AQC0485 / 2023

## The alchemist

Ceramic on Metal · 25.0×40.0 cm · 2023-01-01 · Available

This ceramic sculpture explores the quest for elemental transformation through symbolic geometric forms. A hooded figure serves as the central axis while four shapes radiate outward on slender metal rods, each representing one of the classical alchemical elements: earth, water, air, and fire. The cube, two spheres, and star hover at carefully calibrated distances, suspended in a delicate equilibrium that suggests both connection and perpetual separation.

The figure's face emerges as a complex arrangement of faceted planes rather than smooth surfaces, creating a sense of active contemplation. This angular treatment reinforces the sculpture's central tension between material existence and transcendent aspiration. Hand-formed in terre de petite chamotte and fired at 980 degrees Celsius, the work receives a traditional beeswax finish that deepens the natural earthenware tones and creates a warm, tactile surface. The metal rods penetrate precisely planned sockets, allowing each geometric element to maintain its distinct orbital relationship to the seeker below.

The compact scale of twenty-five by forty by twenty-five centimeters requires close viewing to appreciate how the elements interact with the central figure. As part of the Spells and Magic collection, this piece examines the internal condition of seeking itself, the perpetual human drive to master nature while remaining fundamentally bound to material reality.

The work includes certificate of authenticity 20231231-0072 and bears the artist's signature. The sculpture sits on a metal display base, with pedestals available on request.

*Where earth meets aspiration—the eternal quest made tangible in clay.*



## **The alchemist**

Arnaud Quercy

Ceramic on Metal

25.0×40.0 cm · 2023-01-01

Available

**€3 000**

Arnaud Quercy Creations / AQC0485 / 2023

Arnaud Quercy Creations / AQC0514 / 2024

## Archimedes, the owl

Ceramic on Other · 28.0×34.0 cm · 2024-01-01 · Available

This ceramic sculpture explores wisdom symbolism through cubist geometric abstraction. Part of the Spells and Magic collection, the work transforms Disney's scholarly owl character from "The Sword in the Stone" into geometric language. Quercy references both the ancient Greek mathematician Archimedes and the animated character, creating a bridge between classical learning and popular culture.

Yellow-green tones dominate the composition, with silver and light gray surfaces creating substantial areas across the sculptural planes. Dark brown and black elements provide strong contrast, while ochre accents appear in smaller sections. The surface shows smooth curvilinear forms that suggest the owl's characteristic features through geometric interpretation. Two large circular apertures create the impression of watchful eyes within the abstracted form.

The sculpture measures twenty-eight by thirty-four by seventeen centimeters and weighs approximately four kilograms. Created in France during 2024, the work bears certificate of authenticity number 20240120-0010 and includes the artist's signature on the bottom right. The piece carries catalog designation AQC0514 within the Arnaud Quercy Creations series.

*Ancient wisdom frozen in clay — where myth meets geometry.*



**Archimedes, the owl**

Arnaud Quercy  
Ceramic on Other

28.0×34.0 cm · 2024-01-01

Available

**€2 100**

Arnaud Quercy Creations / AQC0514 / 2024

Arnaud Quercy Creations / AQC0571 / 2024

## GRIMOIRE

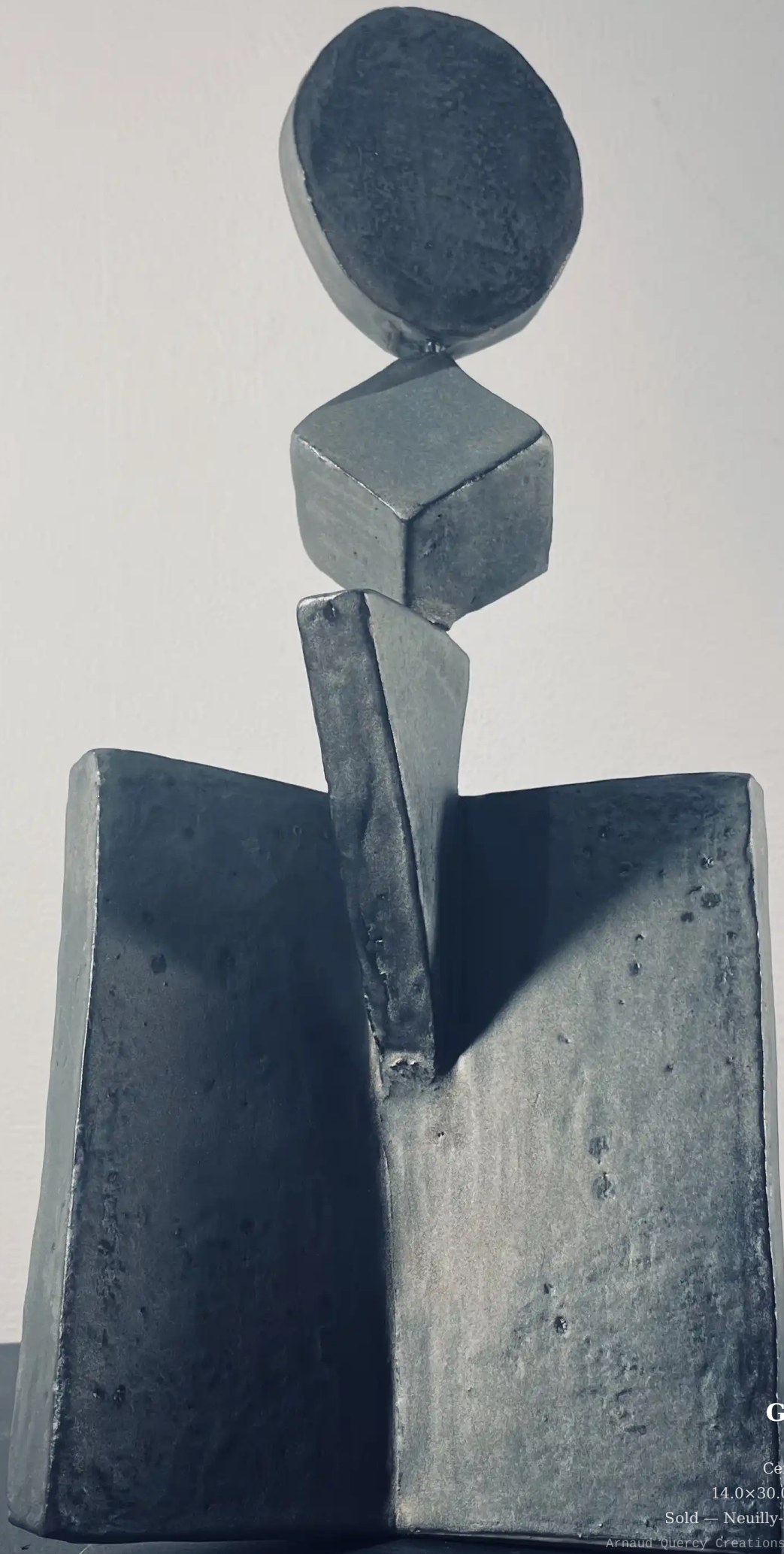
Ceramic on Ceramic · 14.0×30.0 cm · 2024-01-01 · Sold — Neuilly-sur-Seine, France

Grimoire explores the transformation of knowledge into physical form through the imagery of a magical book. Part of the Spells and Magic collection, this ceramic sculpture examines how written words become tangible power, using the grimoire as a symbol of structured expression that bridges language and material reality.

The sculpture presents geometric forms stacked above an open book-shaped base, finished in rhodium enamel that creates a metallic surface. A cube, prism, and circle rise in balanced arrangement, each form representing different aspects of magical transformation. The rhodium finish provides uniform reflective properties across all surfaces, while the geometric precision creates clear visual relationships between the stacked elements.

The work measures fourteen by thirty by ten centimeters and weighs approximately one kilogram. Created in France during 2024, the sculpture carries certificate of authenticity number 20240428-0067 with the artist's signature on the back. The piece transforms the traditional concept of a spell book into contemporary sculptural language, making abstract ideas of knowledge and mystery physically present through ceramic construction.

*A spell book frozen in the moment its secrets take flight.*



**GRIMOIRE**

Arnaud Quercy

Ceramic on Ceramic

14.0×30.0 cm · 2024-01-01

Sold — Neuilly-sur-Seine, France

Arnaud Quercy Creations / AQC0571 / 2024

Arnaud Quercy Creations / AQC0506 / 2024

## The Dance of the Siblings - The Dualism of Apollo and Artemis

Acrylic on wood panel, polystyrene, acid free paper · 30.0×42.0 cm · 2024-01-01 · Not for sale

This work explores the complementary relationship between Apollo and Artemis through stark compositional division. The left half remains empty, representing Apollo as pure illumination. The right half concentrates three geometric elements—a semi-circle, circle, and triangle—that together embody Artemis as material presence. The vertical axis enacts their sibling relationship, presenting two halves of one whole.

The composition uses warm beige tones on the left transitioning to cool blue-grey surfaces on the right. The dimensional quality results from layering fabric, plaster, gesso, and acrylic paint over polystyrene substrate mounted on wood panel. This multi-layered technique creates relief surfaces where geometric forms appear to float above the ground. The three-centimeter depth allows the mythological framework to exist as spatial structure rather than flat illustration.

Working on thirty by forty-two centimeter wood panel, the piece translates ancient Greek mythology into contemporary geometric language. Part of the Mediterranean Echoes collection, this work bridges sculptural and painterly approaches through dimensional surface treatment. The vertical format emphasizes the compositional division where void and form enact relationships between clarity and embodiment.

The work includes certificate of authenticity 20240114-0002 and tests polystyrene as a sculptural substrate for future development.

*Where ancient myth becomes tangible geometry—own the silence and form of divine twins.*



**The Dance of the Siblings - The Dualism of Apollo and Artemis**

Arnaud Quercy

Acrylic on wood panel, polystyrene, acid free paper

30.0×42.0 cm · 2024-01-01

Not for sale

Arnaud Quercy Creations / AQC0506 / 2024

Arnaud Quercy Creations / AQC0413 / 2022

## The Alchemist

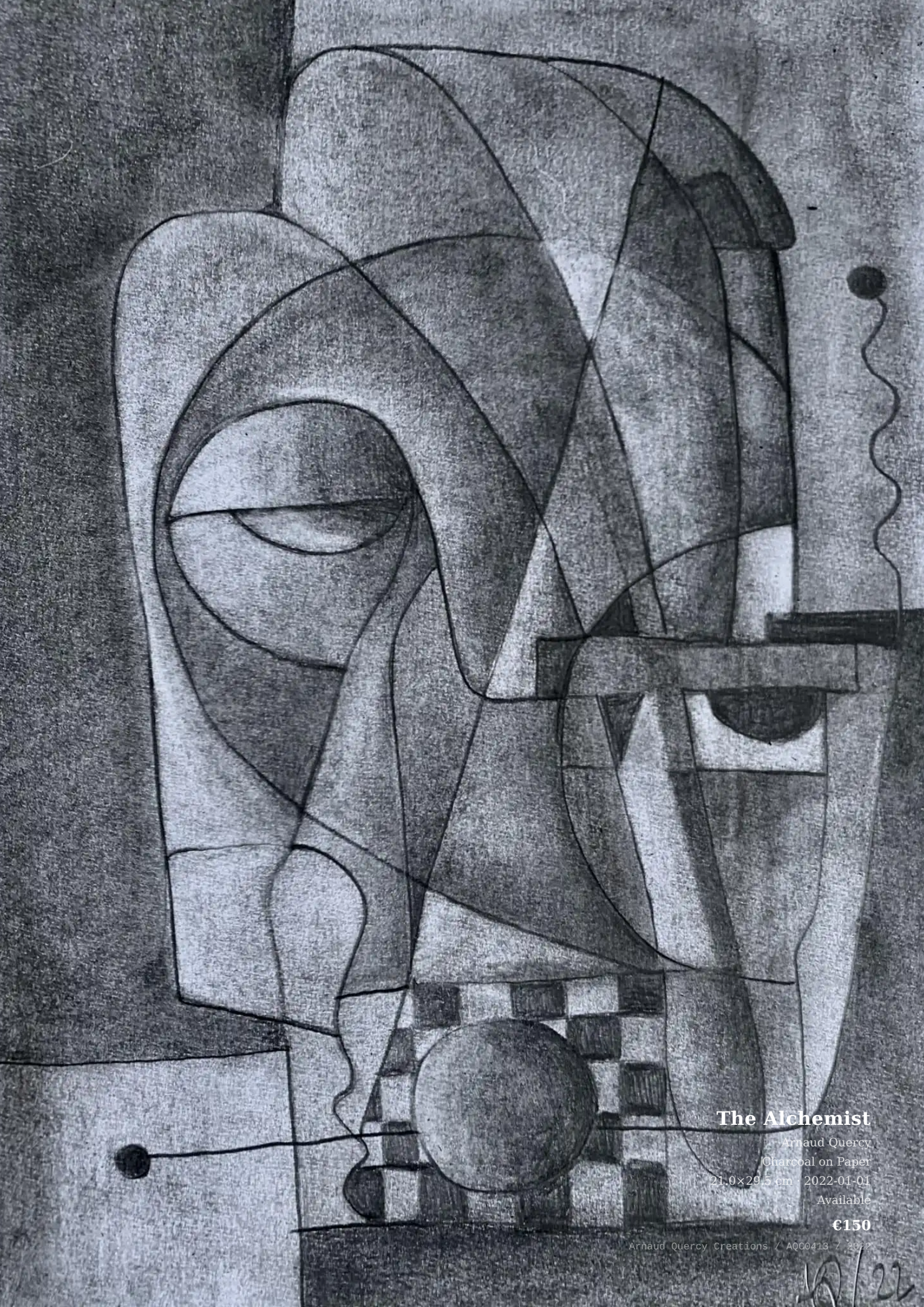
Charcoal on Paper · 21.0×29.5 cm · 2022-01-01 · Available

The Alchemist depicts Zosimos of Panopolis in his tower, exploring the transformation of knowledge through fragmented geometric forms. Part of the Spells and Magic collection, this work examines how ancient wisdom appears when broken into angular components and reassembled through contemporary perspective. The drawing investigates the relationship between scholarly pursuit and visual deconstruction.

Gray tones dominate the composition, creating a monochromatic foundation that emphasizes structural relationships over color variation. Black lines define the geometric divisions that fragment the alchemist's form, while white areas provide contrast and suggest illumination within the tower setting. The charcoal medium allows for subtle gradations between light and shadow, building depth through tonal variation rather than linear perspective. Angular shapes intersect and overlap, creating a cubist interpretation of the figure and architectural elements.

The work measures 21.0 × 29.5 cm on paper, positioning it within Quercy's small-format contemporary drawings. The piece carries certificate of authenticity number 20221231-0083 and features the artist's signature on the front. Created in France during 2022, the drawing represents Quercy's approach to historical subjects through modern geometric analysis.

*Ancient wisdom shattered and rebuilt — where alchemy meets cubist vision*



**The Alchemist**

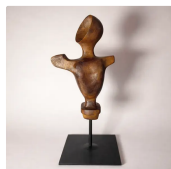
Arnaud Quercy  
Charcoal on Paper  
21.0x29.5 cm - 2022-01-01  
Available

**€150**

Arnaud Quercy Creations / AQC0413 / 2022

18/22

## MYTHS &amp; LEGENDS

**Noppera - bo - The Mujina of the Akasaka Road**

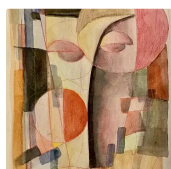
3D Printed Wood PLA on Metal  
20.5×12.0 cm · 2021-01-01  
Sold — Schmitt, Germany  
AQC0336

**The Alchemist**

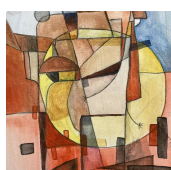
Charcoal on Paper  
21.0×29.5 cm · 2022-01-01  
Available  
AQC0413

**The Alchemist - Variations on Zosimos of panopolis theme**

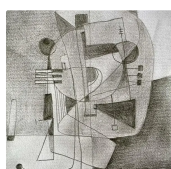
Charcoal on Paper  
21.0×29.5 cm · 2023-01-01  
Available  
AQC0415

**The myth of Kyrnos**

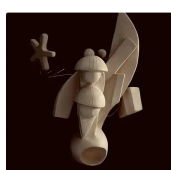
Oil on Paper  
21.0×29.0 cm · 2023-01-01  
Not for sale  
AQC0477

**The Centaur of Pompeii**

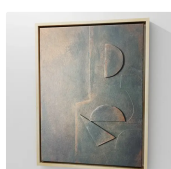
Oil on paper  
21.0×29.0 cm · 2023-01-01  
Not for sale  
AQC0478

**Psyche Unveiled**

Charcoal on Paper  
2023-01-01  
Not for sale  
AQC0484

**The alchemist**

Ceramic on Metal  
25.0×40.0 cm · 2023-01-01  
Available  
AQC0485

**The Dance of the Siblings - The Dualism of Apollo and Artemis**

Acrylic on wood panel, polystyrene, acid free paper  
30.0×42.0 cm · 2024-01-01  
Not for sale  
AQC0506

**Archimedes, the owl**

Ceramic on Other  
28.0×34.0 cm · 2024-01-01  
Available  
AQC0514





**GRIMOIRE**

Ceramic on Ceramic

14.0×30.0 cm · 2024-01-01

Sold — Neuilly-sur-Seine, France

AQC0571



## Shakespeare

---

Arnaud Quercy Creations / AQC0465 / 2023

## Ariel - The tempest

Ceramic on Ceramic · 12.0×15.0 cm · 2023-01-01 · Sold — Boulogne-Billancourt, France

This ceramic sculpture transforms Shakespeare's air spirit through elemental paradox, binding the ethereal character of Ariel in earth and fire through hand-formed petite chamotte terra. High-fired and sealed with beeswax using ancient protective techniques, the work intensifies the contradiction between the spirit's nature and its material imprisonment. The piece evolves from an earlier 2022 work, abandoning representational features entirely in favor of geometric fragmentation that captures the character's shapeshifting essence through spatial decomposition.

Faceted planes break across the form's surface, creating sharp angular edges that suggest both violent containment and impossible dissolution. The sculpture presents a spirit arrested mid-dispersal, scattered across geometric breaks rather than held in singular form. A single hollow opening in the upper portion serves as the last trace of identity, a gap that admits the work's own incompleteness. The raw earthen surface, textured from the chamotte clay body, contrasts with the smooth beeswax finish that seals and protects the fired ceramic.

The vertical composition rises from a wider base, encoding aspiration toward freedom even while bound in earthen weight. Standing twelve centimeters wide by fifteen centimeters deep by twenty-seven centimeters tall, the sculpture requires close viewing to perceive how the diagonal lean creates temporary equilibrium. The form suggests a configuration that might collapse into constituent fragments or reconstitute into another shape, rendering Ariel's essential paradox as arrested motion in fired clay.

Part of the Spells and Magic collection exploring mythological themes through ceramic form, this work demonstrates how traditional hand-forming techniques and high-fire processes can embody conceptual contradictions. The sculpture includes certificate of authenticity 20231231-0052 and represents a sold work from the artist's 2023 production.

*Where Shakespeare's most ethereal spirit becomes earth, fire, and wax—impossible containment made visible.*



**Ariel - The tempest**

Arnaud Quercy

Ceramic on Ceramic

12.0×15.0 cm · 2023-01-01

Sold — Boulogne-Billancourt, France

Arnaud Quercy Creations / AQC0465 / 2023

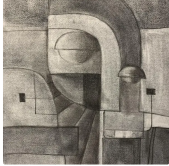
## SHAKESPEARE

**Ariel - The Spirit**

3D Printed Wood PLA on PLA  
6.0×15.0 cm · 2022-01-01

Not for sale

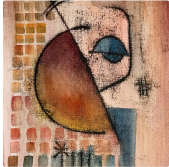
AQC0332

**Sir Galahad**

Charcoal on Paper  
21.0×28.5 cm · 2022-01-01

Available

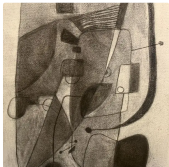
AQC0432

**Sir John Falstaff**

Watercolor on Paper  
21.0×29.5 cm · 2022-01-01

Sold — St Charles, USA

AQC0433

**Bertram**

Charcoal on Paper  
21.0×28.5 cm · 2022-01-01

Available

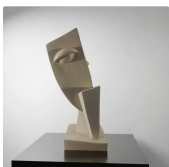
AQC0442

**Ariel, the spirit**

Pencil on Paper  
21.0×30.0 cm · 2021-04-05

Not for sale

AQC0458

**Ariel - The tempest**

Ceramic on Ceramic  
12.0×15.0 cm · 2023-01-01

Sold — Boulogne-Billancourt, France

AQC0465



**RELATED PUBLICATIONS (64)**

Aqc0332 Physical Specifications	AQC0332
Aqc0332 Wood Grain Simulation Through Print Orientation	AQC0332
Aqc0332 Material Paradox As Character Embodiment	AQC0332
Aqc0332 Digital Image Documentation Aqc0332_Img_Full_1024X1024_Webp	AQC0332
Aqc0336 Physical Specifications	AQC0336
Aqc0336 Ideamorphic Translation Of Folklore Through Material	AQC0336
Aqc0336 Cubist Abstraction As Codex For Supernatural Subjects	AQC0336
Aqc0336 Wood Pla As Medium For Folkloric Materiality	AQC0336
Aqc0336 Digital Image Documentation Aqc0336_Img_Full_1024X1024_Webp	AQC0336
Aqc0389 Physical Specifications	AQC0389
Aqc0389 Digital Image Documentation Aqc0389_Img_Full_1475X984_Webp	AQC0389
Aqc0413 Physical Specifications	AQC0413
Aqc0413 Digital Image Documentation Aqc0413_Img_Full_1536X2048_Webp	AQC0413
Aqc0415 Physical Specifications	AQC0415
Aqc0415 Digital Image Documentation Aqc0415_Img_Full_1536X2048_Webp	AQC0415
Aqc0432 Physical Specifications	AQC0432
Aqc0432 Digital Image Documentation Aqc0432_Img_Full_1536X2048_Webp	AQC0432
Aqc0433 Sir John Falstaff As Visual Character Study Contradiction Ex	AQC0433
Computational Image Analysis - AQC0433	AQC0433
Digital Image Documentation - aqc0433_img_full_1536x2048_webp	AQC0433
Physical Specifications	AQC0433
Aqc0442 Physical Specifications	AQC0442
Aqc0442 Digital Image Documentation Aqc0442_Img_Full_1536X2048_Webp	AQC0442
Aqc0443 Digital Image Documentation Aqc0443_Img_Full_1536X2048_Webp	AQC0443
Aqc0443 Physical Specifications	AQC0443
Aqc0443 Computational Image Analysis Aqc0443	AQC0443
Aqc0458 Origin Point Of The Ariel Series	AQC0458
Digital Image Documentation - aqc0458_img_full_2053x2737_webp	AQC0458
Physical Specifications	AQC0458
Aqc0465 Material Evolution From Hybrid To Elemental Bondage	AQC0465
Aqc0465 Cubist Fragmentation As Spirit Dispersal	AQC0465
Digital Image Documentation - aqc0465_img_full_2500x2500_webp	AQC0465
Physical Specifications	AQC0465
Aqc0477 Digital Image Documentation Aqc0477_Img_Full_526X701_Webp	AQC0477
Aqc0477 Physical Specifications	AQC0477
Aqc0477 Computational Image Analysis Aqc0477	AQC0477
Aqc0478 Digital Image Documentation Aqc0478_Img_Full_1536X2048_Webp	AQC0478
Aqc0478 Physical Specifications	AQC0478
Aqc0478 Computational Image Analysis Aqc0478	AQC0478
Aqc0484 Physical Specifications	AQC0484
Aqc0484 Digital Image Documentation Aqc0484_Img_Full_1366X2048_Webp	AQC0484
Aqc0485 Sculptural Integration Of Alchemical Symbolism	AQC0485
Aqc0485 Material And Technical Execution	AQC0485
Aqc0485 Digital Image Documentation Aqc0485_Img_Full_526X701_Webp	AQC0485
Physical Specifications	AQC0485
Aqc0506 Polystyrene Layering As Dimensional Substrate	AQC0506

Aqc0506 Artemis As Geometric Triad	AQC0506
Digital Image Documentation - aqc0506_img_full_2500x2500_webp	AQC0506
Physical Specifications	AQC0506
Aqc0514 Playful Cubist Appropriation Of Archimedes Character	AQC0514
Aqc0514 Ceramic Structural And Surface Methodology For Complex Forms	AQC0514
Computational Image Analysis - AQC0514	AQC0514
Digital Image Documentation - aqc0514_img_full_1638x2048_webp	AQC0514
Physical Specifications	AQC0514
Aqc0571 Grimoire As Ideamorphic Subject	AQC0571
Aqc0571 Geometric Forms As Spell Formulae And Ascending Composition	AQC0571
Aqc0571 Internal Metal Armature For Structural Engineering	AQC0571
Aqc0571 Rhodium Enamel Surface	AQC0571
Digital Image Documentation - aqc0571_img_full_3024x3024_webp	AQC0571
Physical Specifications	AQC0571
Digital Image Documentation - aqc0658_img_full_1582x2373_webp	AQC0658
Physical Specifications	AQC0658
Digital Image Documentation - aqc0659_img_full_2500x2500_webp	AQC0659
Physical Specifications	AQC0659

© 2026 Arnaud Quercy

Published by: Art Quam Anima Publishing New York LLC

AQA PUBLISHING LLC

c/o Northwest Registered Agent, 418 Broadway, Ste N

Albany, New York, 12207

+1 917-764-5470

[publishing.artquamanima.com](http://publishing.artquamanima.com)

Last updated: 2026-04-09

Persistent URI: <https://publishing.artquamanima.com/en/catalogs/2025/10/spells-and-magic-72.pdf>