

SERIES

# Db Major



*Arnaud Quercy*

13 works

Art Quam Anima Publishing

ART-SER0005

# Db Major — Series — 13 works

Arnaud Quercy

---

*Db Major is a series of 13 paintings by Arnaud Quercy, created between 2024 and 2025 in acrylic on linen canvas, acrylic on paper, acrylic on wood panel and watercolor on paper. Formats range from 10×15 cm to 60×120 cm. 6 works are held in private collections (Paris, France, Sao Paulo, Brazil, Germany). 7 remain available for acquisition at Art Quam Anima, 28 rue du Dragon, Paris. Works presented at: Rencontres au Marché de la Création, Salon d'art contemporain - Métamorphose, Paris and Permanent Collection 2025 - Resonance in Form and 7 more.*

Db Major is built from five flats — a key that lives in the deep end of Western harmony, rich with enharmonic ambiguity and expressive weight. Its interval structure (root, major third, perfect fifth) is shared by every major triad, but the specific placement of Db on the circle of fifths gives it a gravity that composers have long understood. Chopin chose this key for his Raindrop Prelude, letting its low resonance carry the persistent pulse of water against glass. In the Synesthetic Explorations, Db Major becomes the subject of thirteen piano études, each one a new translation of that same gravity into color.

Through chromesthesia, the three chord tones produce an entirely cool palette. The root, Db, registers as blue-green — dark and saturated in the lower octaves, fading toward gray as it rises. The third, F, carries red-violet, the only tone in the triad that edges toward warmth, a twilight hue threading through the middle register. The fifth, Ab, reads as deep blue leaning toward blue-violet, reinforcing the cool foundation. Together they build a palette of oceanic depth, one in which register determines everything: sub-bass pitches compress toward near-black, mid-range tones reach full saturation, and the highest notes dissolve into pale, almost-white light.

The thirteen études span two years of work across formats ranging from large linen canvases to intimate works on paper. The prevailing character is Animé and legato, with soft dynamics — most études speak at piano or mezzo-piano. Bell and inverted-bell contours dominate, the phrases arching and folding within spans that reach from Db0, at the extreme low end of the keyboard, to F6 near its upper limit. Three waltzes break from the prevailing four-beat meter into triple time, their ascending contours lending a lilting momentum absent from the rest. One étude — Variation 2 — slows to Modéré, and three more settle into the patience of Lent. Non-chord tones appear throughout the series: red-orange, orange, yellow-green, yellow-orange — warm accents that punctuate the cool field without overtaking it. The tension between the triad's cool identity and these foreign intrusions is the series' central visual drama.

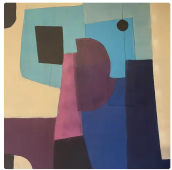
The opening work (AQC0701), the largest in the series at 73 by 92 centimetres on linen, sets the terms with a contradiction. Nine notes across five octaves, an inverted bell, and a commanding warm orange accent at A5 that dominates the canvas — "a lit window in a dark street," as Quercy's own description puts it. Variation 5 (AQC0725) offers the opposite extreme: the third is absent entirely, no F anywhere in the étude, the red-violet stripped away and replaced by a blaze of red-orange from three repeated G's. It is the only variation that omits a chord tone, leaving the harmony open and ambiguous. Variation 12 (AQC0938), the final work, resolves the series into its purest expression — six notes, a waltz, the fifth flooding the upper canvas in the most vivid blue of the entire collection.

Across the thirteen canvases, the viewer encounters a palette that shifts between depth and dissolution. Blue-green dominates the lower portions, compressed toward black in the bass registers, softening toward gray in the later variations. Red-violet threads through the middle registers, sometimes leaning toward violet, sometimes bending unexpectedly toward yellow where a neighboring non-chord tone pulls at its hue. The warm accents — red-orange, orange, yellow-green — appear in nearly every étude, but their weight varies dramatically: in some works they are a single flicker, in others they compete with the triad for visual attention. The waltzes tend toward ascending contours and brighter upper registers, while the slow études let darkness settle and linger. Repetition reveals not sameness but range — thirteen ways the same cool chord can absorb, resist, or yield to warmth.

Db Major arrives, across these thirteen études, at something Chopin understood: that a key built on five flats carries its own weather. The series moves from the warm contradiction of its opening to the cool surrender of its close — "Db Major arriving, at last, at the pure expression of its own temperature." Works from the series have entered col-

lections in Paris, São Paulo, and Germany, carrying that blue-green darkness outward into the world. What remains is the question each variation poses differently: how much warmth can a cool key hold before it becomes something else entirely?

## WORKS



### **Db Major - Research on Harmony - Variation 3**

Acrylic on Linen Canvas  
73.0×92.0 cm · 2024-01-01

Available

AQC0701

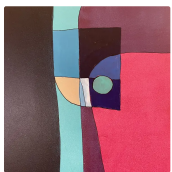


### **Db Major - Research on Harmony - Variation 4**

Acrylic on Linen Canvas  
60.0×120.0 cm · 2024-01-01

Available

AQC0702



### **Db Major - Research on Harmony - Variation 5**

Acrylic on Wood Panel  
30.0×42.0 cm · 2024-01-01

Available

AQC0722

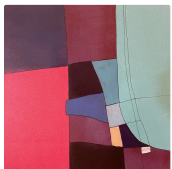


### **Db Major - Research on Harmony - Variation 6**

Acrylic on Wood Panel  
30.0×42.0 cm · 2024-01-01

Available

AQC0723

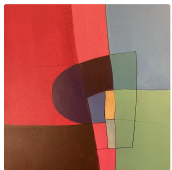


### **Db Major - Research on Harmony - Variation 7**

Acrylic on Wood Panel  
30.0×42.0 cm · 2024-01-01

Available

AQC0724

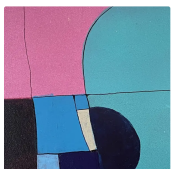


### **Db Major - Research on Harmony - Variation 8**

Acrylic on Wood Panel  
30.0×42.0 cm · 2024-01-01

Available

AQC0725

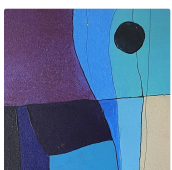


### **Db Major - Research on Harmony - Variation 9**

Acrylic on Wood Panel  
15.0×21.0 cm · 2024-01-01

Available

AQC0776



### **Db Major - Research on Harmony - Variation 10**

Acrylic on Wood Panel  
15.0×21.0 cm · 2024-01-01

Sold — Paris, France

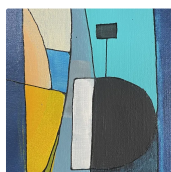
AQC0777





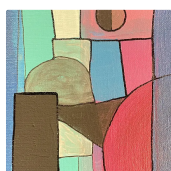
**Db Major - Research on Harmony - Variation 12**

Watercolor on Paper  
 10.0×15.0 cm · 2025-01-01  
 Sold — Paris, France  
 AQC0855



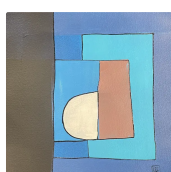
**Db Major - Research on Harmony - Variations 15**

Acrylic on Paper  
 10.5×15.0 cm · 2025-11-23  
 Sold — France  
 AQC0869



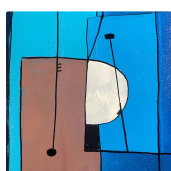
**Db Major - Research on Harmony - Variations 14**

Acrylic on Paper  
 10.5×15.0 cm · 2025-11-23  
 Sold — France  
 AQC0871



**Db Major - Research on Harmony - Variations 13**

Acrylic on Paper  
 21.0×21.0 cm · 2025-11-23  
 Sold — Sao Paulo, Brazil  
 AQC0902



**Db Major - Research on Harmony - Variations 14**

Acrylic on Paper  
 12.0×18.0 cm · 2025-12-31  
 Sold — Germany  
 AQC0938



**RELATED PUBLICATIONS (40)**

Aqc0701 Digital Image Documentation Aqc0701_Img_Full_2840X3550_Webp	AQC0701
Aqc0701 Physical Specifications	AQC0701
Aqc0701 Computational Image Analysis Aqc0701	AQC0701
Aqc0702 Digital Image Documentation Aqc0702_Img_Full_1575X3240_Webp	AQC0702
Aqc0702 Physical Specifications	AQC0702
Aqc0702 Computational Image Analysis Aqc0702	AQC0702
Aqc0722 Digital Image Documentation Aqc0722_Img_Full_3024X4032_Webp	AQC0722
Aqc0722 Physical Specifications	AQC0722
Aqc0722 Computational Image Analysis Aqc0722	AQC0722
Aqc0723 Digital Image Documentation Aqc0723_Img_Full_3024X4032_Webp	AQC0723
Aqc0723 Physical Specifications	AQC0723
Aqc0723 Computational Image Analysis Aqc0723	AQC0723
Aqc0724 Digital Image Documentation Aqc0724_Img_Full_2952X3936_Webp	AQC0724
Aqc0724 Physical Specifications	AQC0724
Aqc0724 Computational Image Analysis Aqc0724	AQC0724
Aqc0725 Digital Image Documentation Aqc0725_Img_Full_3024X4032_Webp	AQC0725
Aqc0725 Physical Specifications	AQC0725
Aqc0725 Computational Image Analysis Aqc0725	AQC0725
Aqc0776 Digital Image Documentation Aqc0776_Img_Full_2307X3460_Webp	AQC0776
Aqc0776 Physical Specifications	AQC0776
Aqc0776 Computational Image Analysis Aqc0776	AQC0776

Aqc0777 Digital Image Documentation Aqc0777_Img_Full_2299X3449_Webp	AQC0777
Aqc0777 Physical Specifications	AQC0777
Aqc0777 Computational Image Analysis Aqc0777	AQC0777
Aqc0855 Digital Image Documentation Aqc0855_Img_Full_2239X2986_Webp	AQC0855
Aqc0855 Physical Specifications	AQC0855
Aqc0855 Computational Image Analysis Aqc0855	AQC0855
Aqc0869 Digital Image Documentation Aqc0869_Img_Full_1974X2961_Webp	AQC0869
Aqc0869 Physical Specifications	AQC0869
Aqc0869 Computational Image Analysis Aqc0869	AQC0869
Aqc0871 Digital Image Documentation Aqc0871_Img_Full_1939X2908_Webp	AQC0871
Aqc0871 Physical Specifications	AQC0871
Aqc0871 Computational Image Analysis Aqc0871	AQC0871
Aqc0902 Digital Image Documentation Aqc0902_Img_Full_2111X2111_Webp	AQC0902
Aqc0902 Physical Specifications	AQC0902
Aqc0902 Computational Image Analysis Aqc0902	AQC0902
Aqc0938 Spread Voicing Of Db Major 7 In Aqc0938	AQC0938
Computational Image Analysis - AQC0938	AQC0938
Digital Image Documentation - aqc0938_img_full_1942x2718_webp	AQC0938
Physical Specifications	AQC0938

ART - SER0005

© 2026 Arnaud Quercy

Published by: Art Quam Anima Publishing New York LLC

AQA PUBLISHING LLC

c/o Northwest Registered Agent, 418 Broadway, Ste N

Albany, New York, 12207

+1 917-764-5470

publishing.artquamanima.com

First published: 2026-04-09 · Last updated: 2026-04-09

Persistent URI: <https://publishing.artquamanima.com/en/catalogs/2026/03/db-major-1zpq.pdf>