

SERIES

Shakespeare



Arnaud Quercy

6 works

Art Quam Anima Publishing

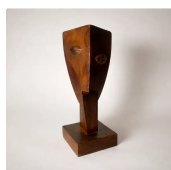
ART-SER0035

Shakespeare — Series — 6 works

Arnaud Quercy

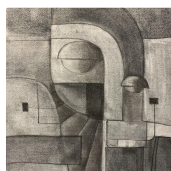
Shakespeare is a series of 6 artworks by Arnaud Quercy, created between 2021 and 2023 in 3d printed wood pla on pla, ceramic, charcoal on paper, pencil on paper and watercolor on paper. Formats range from 6×15 cm to 21×30 cm. 2 works are held in private collections (St Charles, USA, Boulogne-Billancourt, France). 2 remain available for acquisition at Art Quam Anima, 28 rue du Dragon, Paris. Works presented at: Transcendence - World Premiere of Ephemera Arts, Rencontres au Marché de la Création and Salon d'art contemporain - Metamorphose, Paris and 8 more.

WORKS



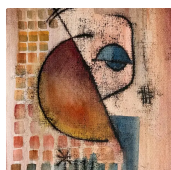
Ariel - The Spirit

3D Printed Wood PLA on PLA
6.0×15.0 cm · 2022-01-01
Not for sale
AQC0332



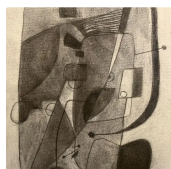
Sir Galahad

Charcoal on Paper
21.0×28.5 cm · 2022-01-01
Available
AQC0432



Sir John Falstaff

Watercolor on Paper
21.0×29.5 cm · 2022-01-01
Sold — St Charles, USA
AQC0433



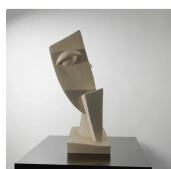
Bertram

Charcoal on Paper
21.0×28.5 cm · 2022-01-01
Available
AQC0442



Ariel, the spirit

Pencil on Paper
21.0×30.0 cm · 2021-04-05
Not for sale
AQC0458



Ariel - The tempest

Ceramic on Ceramic
12.0×15.0 cm · 2023-01-01
Sold — Boulogne-Billancourt, France
AQC0465



RELATED PUBLICATIONS (19)

Aqc0332 Physical Specifications	AQC0332
Aqc0332 Wood Grain Simulation Through Print Orientation	AQC0332
Aqc0332 Material Paradox As Character Embodiment	AQC0332
Aqc0332 Digital Image Documentation Aqc0332_Img_Full_1024X1024_Webp	AQC0332
Aqc0432 Physical Specifications	AQC0432

Aqc0432 Digital Image Documentation Aqc0432_Img_Full_1536X2048_Webp	AQC0432
Aqc0433 Sir John Falstaff As Visual Character Study Contradiction Ex	AQC0433
Computational Image Analysis - AQC0433	AQC0433
Digital Image Documentation - aqc0433_img_full_1536x2048_webp	AQC0433
Physical Specifications	AQC0433
Aqc0442 Physical Specifications	AQC0442
Aqc0442 Digital Image Documentation Aqc0442_Img_Full_1536X2048_Webp	AQC0442
Aqc0458 Origin Point Of The Ariel Series	AQC0458
Digital Image Documentation - aqc0458_img_full_2053x2737_webp	AQC0458
Physical Specifications	AQC0458
Aqc0465 Material Evolution From Hybrid To Elemental Bondage	AQC0465
Aqc0465 Cubist Fragmentation As Spirit Dispersal	AQC0465
Digital Image Documentation - aqc0465_img_full_2500x2500_webp	AQC0465
Physical Specifications	AQC0465

ART - SER0035

© 2026 Arnaud Quercy

Published by: Art Quam Anima Publishing New York LLC

AQA PUBLISHING LLC

c/o Northwest Registered Agent, 418 Broadway, Ste N

Albany, New York, 12207

+1 917-764-5470

publishing.artquamanima.com

First published: 2026-04-09 · Last updated: 2026-04-09

Persistent URI: <https://publishing.artquamanima.com/en/catalogs/2026/03/shakespeare-1zr6.pdf>