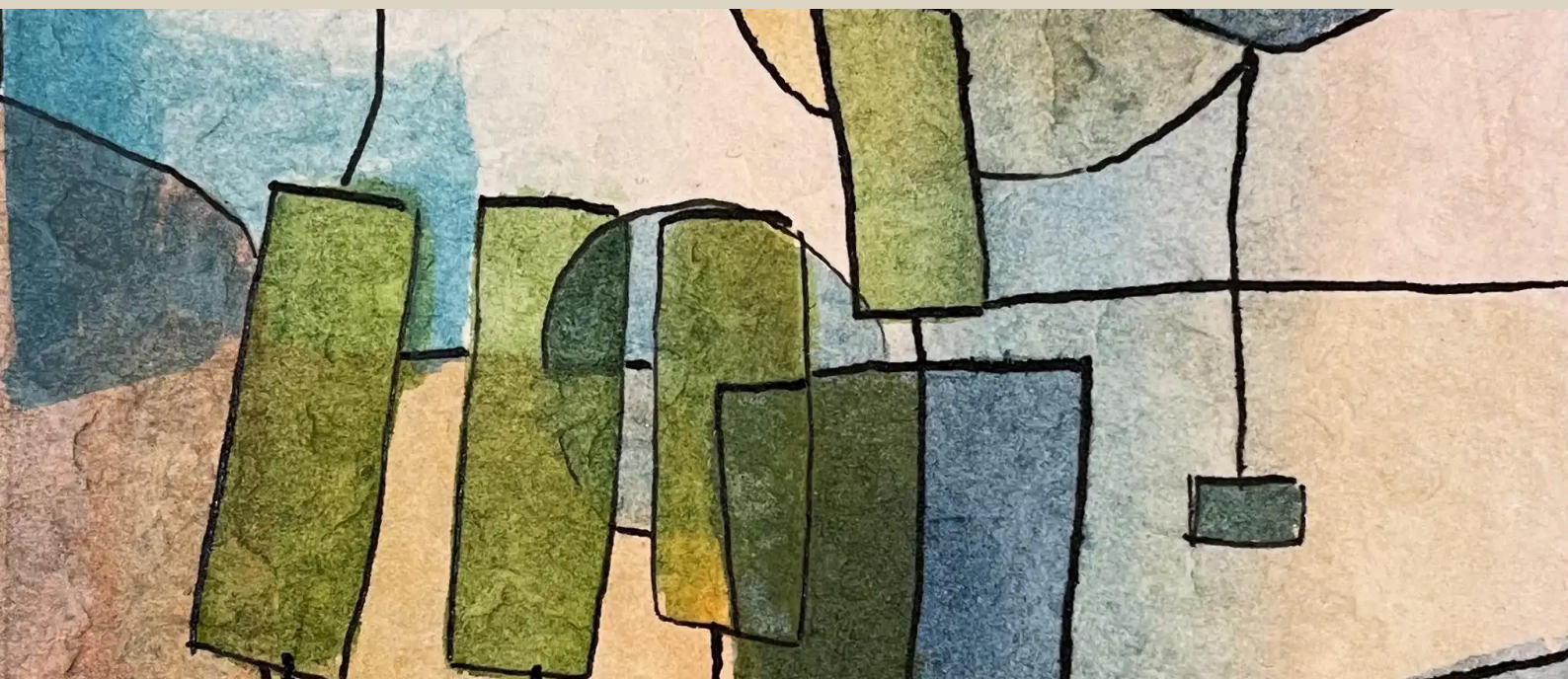


SERIES

The Gardens



Arnaud Quercy

8 works

Art Quam Anima Publishing

ART-SER0057

The Gardens — Series — 8 works

Arnaud Quercy

The Gardens is a series of 8 paintings by Arnaud Quercy, created in 2024 in acrylic on paper and watercolor on paper. Formats range from 10×15 cm to 12×16 cm. All 8 works in this series are held in private collections (Paris, France, Issy-les-Moulineaux, France, Los Angeles, USA, Henderson, USA, Italy). Works presented at: Rencontres au Marché de la Création, Salon d'art contemporain - Metamorphose, Paris and Permanent Collection 2025 - Resonance in Form.

The Gardens is a series of eight small-format works on paper — acrylic and watercolor — all produced in 2024. The site is consistent: the Jardin du Luxembourg, and a bench at the edge of it. The format is not.

At 10 × 15 cm for the acrylics and 12 × 16 cm for the watercolors, these works resist the monumental. They hold the scale of direct observation, of something noted on the spot rather than composed after the fact. What changes across the series is not the place but the light — or more precisely, the chromatic logic that light imposes on form.

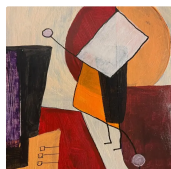
The acrylic works anchor the series. *Promenade aux jardins du Luxembourg, l'été* (AQC0508) and *Pause déjeuner sur un banc* (AQC0510) are structured around warm, high-saturation fields — deep reds, burnt sienna, darkred, russet — organized into angular blocks that press against each other with deliberate weight. These are not descriptive paintings. The bench and the garden path do not appear as such; they are translated into color relationships and geometric boundaries that carry the heat and density of a Paris summer at midday.

The watercolor variations — *Promenade aux jardins du Luxembourg, Variations 3 through 6* (AQC0617-AQC0620) — shift the register entirely. Yellow-ocher and burlywood open out to blue-gray structures; the palette lightens and breathes. Where the acrylics compress, the watercolors diffuse. The medium itself participates in the meaning: the fluid edges of the watercolor ground enact the quality of filtered afternoon light through garden canopies, in a way the acrylic's clean boundaries cannot.

Across both media, dark linear elements — olive and black — perform the work of architecture: they mark limits, define passages, create the sense of a space that is contained but not enclosed. This is a garden as urban interior, bounded by iron fences and stone balustrades, held within the city but separate from it.

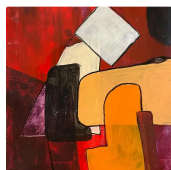
All eight works are sold. Collectors in Paris, Issy-les-Moulineaux, Los Angeles, Henderson, and Italy. The series was shown at the Rencontres au Marché de la Création, the Salon d'art contemporain Metamorphose, and entered the Permanent Collection 2025 — Resonance in Form. The dispersal is itself a kind of diffraction: these small paintings now inhabit different lives, different walls, carrying the same afternoon in different rooms.

WORKS



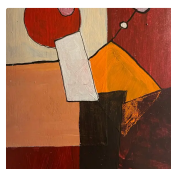
Promenade aux jardins du Luxembourg, l'été

Acrylic on Paper
10.0×15.0 cm · 2024-01-01
Sold — Paris, France
AQC0508



Pause déjeuner sur un banc

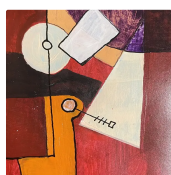
Acrylic on Paper
10.0×15.0 cm · 2024-01-01
Sold — Issy-les-Moulineaux, France
AQC0510



Pause déjeuner sur un banc - Variation 1

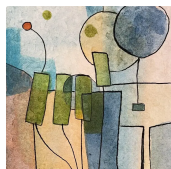
Acrylic on Paper
10.0×15.0 cm · 2024-01-01
Sold — Los Angeles, USA

AQC0516



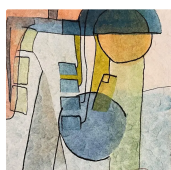
Promenade aux jardins du Luxembourg - variations d'été - Variation 2

Acrylic on Paper
 10.0×15.0 cm · 2024-01-01
 Sold — Henderson, USA
 AQC0518



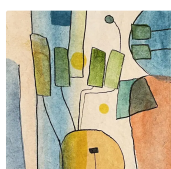
Promenade aux jardins du Luxembourg - Variation 3

Watercolor on Paper
 12.0×16.0 cm · 2024-01-01
 Sold — Paris, France
 AQC0617



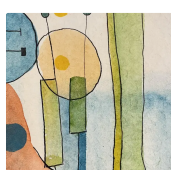
Promenade aux jardins du Luxembourg - Variation 4

Watercolor on Paper
 12.0×16.0 cm · 2024-01-01
 Sold — Italy
 AQC0618



Promenade aux jardins du Luxembourg - Variation 5

Watercolor on Paper
 12.0×16.0 cm · 2024-01-01
 Sold — Italy
 AQC0619



Promenade aux jardins du Luxembourg - Variation 6

Watercolor on Paper
 12.0×16.0 cm · 2024-01-01
 Sold — Paris, France
 AQC0620



RELATED PUBLICATIONS (24)

| | |
|---|---------|
| Aqc0508 Digital Image Documentation Aqc0508_Img_Full_1638X2048_Webp | AQC0508 |
| Aqc0508 Physical Specifications | AQC0508 |
| Aqc0508 Computational Image Analysis Aqc0508 | AQC0508 |
| Aqc0510 Digital Image Documentation Aqc0510_Img_Full_843X1124_Webp | AQC0510 |
| Aqc0510 Physical Specifications | AQC0510 |
| Aqc0510 Computational Image Analysis Aqc0510 | AQC0510 |
| Aqc0516 Digital Image Documentation Aqc0516_Img_Full_2031X2843_Webp | AQC0516 |
| Aqc0516 Physical Specifications | AQC0516 |
| Aqc0516 Computational Image Analysis Aqc0516 | AQC0516 |
| Aqc0518 Digital Image Documentation Aqc0518_Img_Full_2258X3236_Webp | AQC0518 |
| Aqc0518 Physical Specifications | AQC0518 |
| Aqc0518 Computational Image Analysis Aqc0518 | AQC0518 |
| Aqc0617 Digital Image Documentation Aqc0617_Img_Full_2029X2705_Webp | AQC0617 |
| Aqc0617 Physical Specifications | AQC0617 |
| Aqc0617 Computational Image Analysis Aqc0617 | AQC0617 |
| Aqc0618 Digital Image Documentation Aqc0618_Img_Full_1935X2580_Webp | AQC0618 |
| Aqc0618 Physical Specifications | AQC0618 |
| Aqc0618 Computational Image Analysis Aqc0618 | AQC0618 |
| Aqc0619 Digital Image Documentation Aqc0619_Img_Full_1520X2027_Webp | AQC0619 |

| | |
|---|---------|
| Aqc0619 Physical Specifications | AQC0619 |
| Aqc0619 Computational Image Analysis Aqc0619 | AQC0619 |
| Aqc0620 Digital Image Documentation Aqc0620_Img_Full_2229X2972_Webp | AQC0620 |
| Aqc0620 Physical Specifications | AQC0620 |
| Aqc0620 Computational Image Analysis Aqc0620 | AQC0620 |

ART - SER0057

© 2026 Arnaud Quercy

Published by: Art Quam Anima Publishing New York LLC

AQA PUBLISHING LLC

c/o Northwest Registered Agent, 418 Broadway, Ste N

Albany, New York, 12207

+1 917-764-5470

publishing.artquamanima.com

First published: 2026-04-09 · Last updated: 2026-04-09

Persistent URI: <https://publishing.artquamanima.com/en/catalogs/2026/03/the-gardens-29lm.pdf>