

BODY_OF_WORK

Sculpture



Arnaud Quercy

64 œuvres

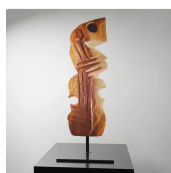
Art Quam Anima Publishing

Sculpture — Body_Of_Work — 64 œuvres

Arnaud Quercy

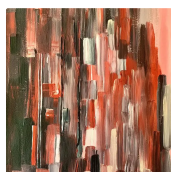
Sculpture est une série de 64 œuvres d'Arnaud Quercy, réalisées entre 2021 et 2026 — PLA bois imprimé 3D sur métal, PLA bois imprimé 3D sur pla, acier sur wood block, acrylique sur papier, acrylique sur wood panel, polystyrène, acid free paper, aquarelle sur papier, crayon sur papier, céramique, céramique sur métal, céramique sur other, céramique sur wood block, fusain sur papier, huile sur marouflage on medium wood panel, huile sur paper, huile sur papier, huile sur toile et sable sur beach. Les formats vont de 6×15 cm à 120×150 cm. 16 œuvres sont conservées dans des collections privées (Paris, France, Istanbul, Turkey, Frankfurt, Germany, Italy, St Charles, USA, Boulogne-Billancourt, France, Schmittgen, Germany, Neuilly-sur-Seine, France). 26 restent disponibles à l'acquisition à Art Quam Anima, 28 rue du Dragon, Paris. Œuvres présentées lors de : Transcendence - World Premiere of Ephemera Arts, Rencontres au Marché de la Création et Salon d'art contemporain - Metamorphose, Paris et 9 autres.

ŒUVRES



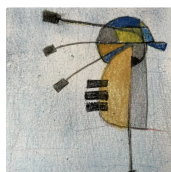
Charles Mingus

Wood
2021-01-01
Non disponible
AQC0229



Voie Parisienne

Acrylic sur Paper
31.0×41.0 cm · 2022-01-01
Disponible
AQC0427



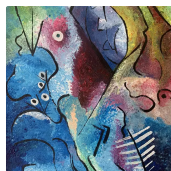
Oiseau, Jam Blues - Juillet - 1952

Watercolor sur Paper
10.0×15.0 cm · 2024-01-01
Vendu — Paris, France
AQC0567



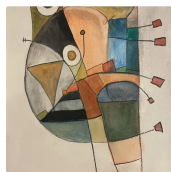
OISEAU (Charlie Parker)

Ceramic sur Metal
26.0×45.0 cm · 2024-01-01
Disponible
AQC0578



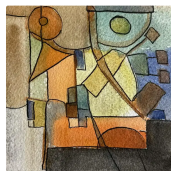
Danse avec les colibris

Acrylic sur Paper
31.0×41.0 cm · 2021-01-01
Disponible
AQC0262



Le Pigeon grognon de Cap Town - Afrique du Sud

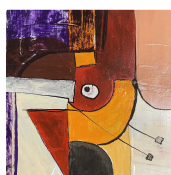
Watercolor sur Paper
21.0×29.5 cm · 2023-01-01
Vendu — Istanbul, Turkey
AQC0504



Le chant du Chardonneret élégant

Watercolor sur Paper
10.0×15.0 cm · 2024-01-01
Vendu — Paris, France

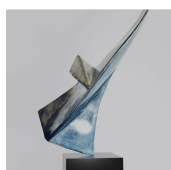
AQC0509

**Le chant du Chardonneret élégant - Variation 1**

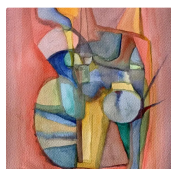
Acrylic sur Paper
10.0×15.0 cm · 2024-01-01
Vendu — Paris, France
AQC0519

**MOUVEMENT DE GROUPE**

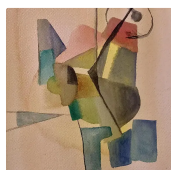
Steel sur Wood Block
24.0×24.0 cm · 2024-01-01
Disponible
AQC0657

**La Mouette de Montparnasse**

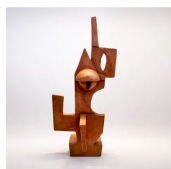
Steel sur Wood Block
60.0×86.0 cm · 2024-09-30
Disponible
AQC0709

**Le Chat d'Istanbul - Variations 1**

Watercolor sur Paper
21.0×30.0 cm · 2023-01-01
Non disponible
AQC0420

**Le Chat d'Istanbul - Variations 4**

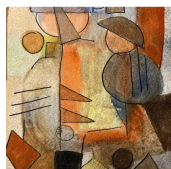
Watercolor sur Paper
21.0×30.0 cm · 2023-01-01
Non disponible
AQC0426

**Le Chat d'Istanbul - Variations 2**

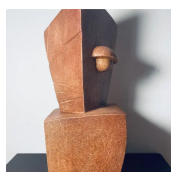
Ceramic sur Ceramic
16.0×40.0 cm · 2023-01-01
Vendu — Frankfurt, Germany
AQC0460

**Le Chat d'Istanbul - Variations 4**

Digital
2023-01-01
Non disponible
AQC0475

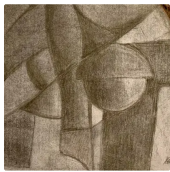
**Le Chat d'Istanbul - Variations 3**

Watercolor sur Paper
10.0×15.0 cm · 2024-01-01
Vendu — Italy
AQC0511

**Un Chat - Recherche sur le cubisme naïf**

Ceramic sur Other
11.0×10.0 cm · 2024-04-08
Disponible
AQC0572



**L'Éleveur de Dragons**

Charcoal sur Paper
21.0×29.5 cm · 2022-01-01
Disponible
AQC0389

**Le Éleveur de Dragons - Variation 1**

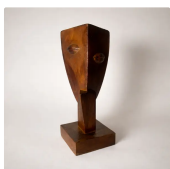
Oil sur Canvas
40.0×50.0 cm · 2023-01-01
Disponible
AQC0443

**Dragon**

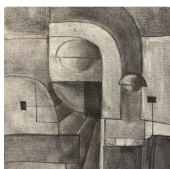
Ceramic sur Ceramic
23.0×13.0 cm · 2024-01-01
Disponible
AQC0658

**Éleveur de Dragons**

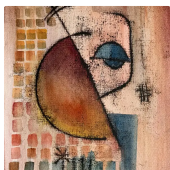
Ceramic sur Metal
34.0×16.0 cm · 2024-01-01
Vendu — Frankfurt, Germany
AQC0659

**Ariel - L'Esprit**

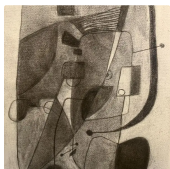
3D Printed Wood PLA sur PLA
6.0×15.0 cm · 2022-01-01
Non disponible
AQC0332

**Chevalier Galahad**

Charcoal sur Paper
21.0×28.5 cm · 2022-01-01
Disponible
AQC0432

**Monsieur John Falstaff**

Watercolor sur Paper
21.0×29.5 cm · 2022-01-01
Vendu — St Charles, USA
AQC0433

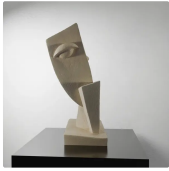
**Bertram**

Charcoal sur Paper
21.0×28.5 cm · 2022-01-01
Disponible
AQC0442

**Ariel, l'esprit**

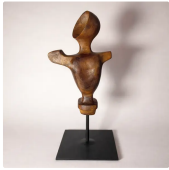
Pencil sur Paper
21.0×30.0 cm · 2021-04-05
Non disponible
AQC0458





Ariel - La tempête

Ceramic sur Ceramic
12.0×15.0 cm · 2023-01-01
Vendu — Boulogne-Billancourt, France
AQC0465



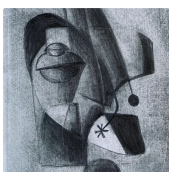
L'Éleveur de Mujina de la Route d'Akasaka

3D Printed Wood PLA sur Metal
20.5×12.0 cm · 2021-01-01
Vendu — Schmittgen, Germany
AQC0336



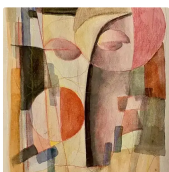
L'Alchimiste

Charcoal sur Paper
21.0×29.5 cm · 2022-01-01
Disponible
AQC0413



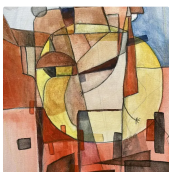
L'Alchimiste - Variations sur le thème de Zosimos de Panopolis

Charcoal sur Paper
21.0×29.5 cm · 2023-01-01
Disponible
AQC0415



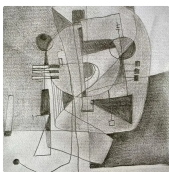
Le mythe de Kyrnos

Oil sur Paper
21.0×29.0 cm · 2023-01-01
Non disponible
AQC0477



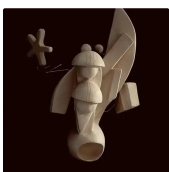
Le Centaure de Pompéi

Oil sur paper
21.0×29.0 cm · 2023-01-01
Non disponible
AQC0478



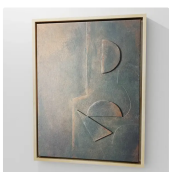
Psyché Dévoilée

Charcoal sur Paper
2023-01-01
Non disponible
AQC0484



L'alchimiste

Ceramic sur Metal
25.0×40.0 cm · 2023-01-01
Disponible
AQC0485



La Danse des Frères et Sœurs - Le Dualisme d'Apollon et Artémis

Acrylic sur wood panel, polystyrene, acid free paper
30.0×42.0 cm · 2024-01-01
Non disponible
AQC0506





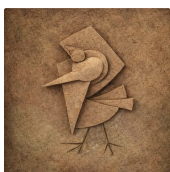
Archimède, le hibou
Ceramic sur Other
28.0×34.0 cm · 2024-01-01
Disponible
AQC0514



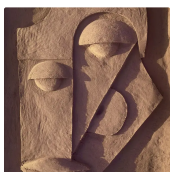
GRIMOIRE
Ceramic sur Ceramic
14.0×30.0 cm · 2024-01-01
Vendu — Neuilly-sur-Seine, France
AQC0571



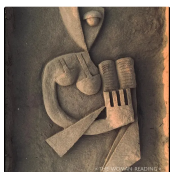
Le voyageur
Sand sur Beach
120.0×150.0 cm · 2022-08-03
Non disponible
AQC0377



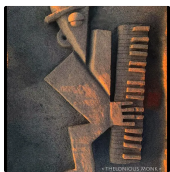
Charlie Parker
Sand sur Beach
120.0×150.0 cm · 2022-08-01
Non disponible
AQC0378



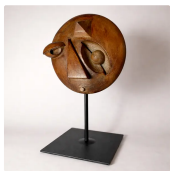
Le Navigateur
Sand sur Beach
120.0×150.0 cm · 2022-08-07
Non disponible
AQC0379



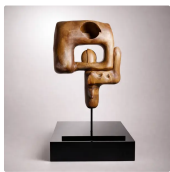
La Femme Lisant
Sand sur Beach
120.0×150.0 cm · 2022-08-05
Non disponible
AQC0380



Thelonious Monk
Sand sur Beach
120.0×150.0 cm · 2022-08-01
Non disponible
AQC0381

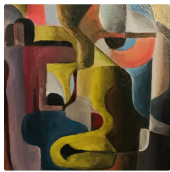


Pythagoras - Recherches sur les tensions #41
3D Printed Wood PLA sur Metal
2022-01-01
Non disponible
AQC0335



Être
3D Printed Wood PLA sur Metal
25.0×35.0 cm · 2022-01-01
Vendu — Paris, France
AQC0337



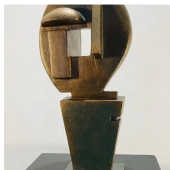
**Proportions du corps et de l'esprit - recherche sur les tensions #43**

Oil sur marouflage on medium wood panel

21.0×30.0 cm · 2022-01-01

Non disponible

AQC0340

**Un Homme Heureux**

Ceramic sur Ceramic

17.0×12.0 cm · 2024-01-01

Disponible

AQC0507

**LECTEUR**

Ceramic sur Ceramic

20.0×14.0 cm · 2024-01-01

Vendu — USA

AQC0582

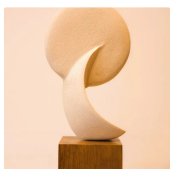
**Le Scribe Public**

Ceramic sur Wood Block

20.0×28.0 cm · 2026-03-28

Disponible

AQC0972

**Après le Passage**

Ceramic sur Wood Block

15.0×34.0 cm · 2026-03-28

Disponible

AQC0973

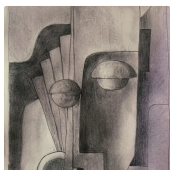
**Autoportrait sur Bûche de Chêne**

Digital

2021-01-01

Non disponible

AQC0296

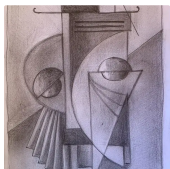
**Ramón, le jardinier**

Pencil sur Paper

14.8×21.0 cm · 2022-01-01

Disponible

AQC0384

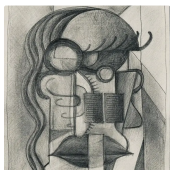
**L'ancien homme et son chapeau**

Pencil sur Paper

14.8×21.0 cm · 2022-01-01

Vendu

AQC0386

**La professeur de français**

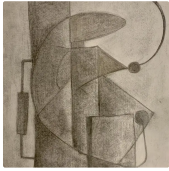
Pencil sur Paper

14.8×21.0 cm · 2022-01-01

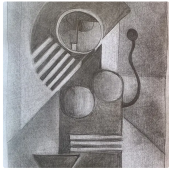
Disponible

AQC0387



**Le conducteur du tramway 28, Lisbonne**

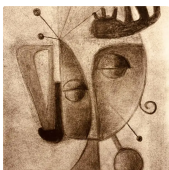
Charcoal sur Paper
21.0×29.5 cm · 2022-01-01
Disponible
AQC0390

**Une femme**

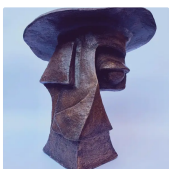
Charcoal sur Paper
21.0×29.5 cm · 2022-01-01
Disponible
AQC0391

**Une femme et son téléphone**

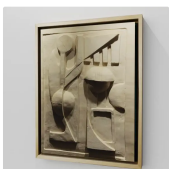
Charcoal sur Paper
21.0×29.5 cm · 2022-01-01
Disponible
AQC0392

**La fille sur le bus**

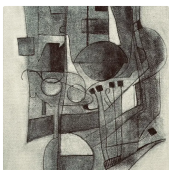
Charcoal sur Paper
21.0×29.5 cm · 2022-01-01
Disponible
AQC0418

**Le Douanier Rousseau**

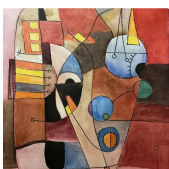
Ceramic sur Ceramic
22.0×21.0 cm · 2023-01-01
Non disponible
AQC0444

**Ramón, le jardinier - Variation 1**

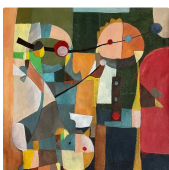
Ceramic sur Ceramic
32.0×44.0 cm · 2023-01-01
Non disponible
AQC0447

**Monsieur Krueger**

Charcoal
20.0×30.0 cm · 2023-01-01
Vendu
AQC0461

**Une Femme - Variation 1**

Watercolor sur Paper
21.0×30.0 cm · 2023-01-01
Non disponible
AQC0473

**Portrait avec chat**

Oil sur Toile
50.0×54.0 cm · 2024-01-01
Non disponible
AQC0517





« Gus », le shih tzu
Ceramic sur Ceramic
20.0×14.0 cm · 2024-03-10
Vendu — Paris, France
AQC0563



TRANQUILLITÉ
Ceramic sur Metal
40.0×12.0 cm · 2024-01-01
Disponible
AQC0581



Rêveur
Ceramic sur Metal
23.0×8.0 cm · 2024-07-05
Disponible
AQC0660



PUBLICATIONS ASSOCIÉES (222)

Aqc0229 Subtractive Carving And Material Resistance	AQC0229
Aqc0229 Symbolic Transliteration Of Bass And Contradiction	AQC0229
Aqc0229 Positioning Within Untamed Creations	AQC0229
Digital Image Documentation - aqc0229_img_full_2500x2500_webp	AQC0229
Physical Specifications	AQC0229
Aqc0262 Digital Image Documentation Aqc0262_Img_Full_1536X2048_Webp	AQC0262
Aqc0262 Physical Specifications	AQC0262
Aqc0262 Computational Image Analysis Aqc0262	AQC0262
Aqc0296 Physical Specifications	AQC0296
Aqc0296 Material Caricature Through Found Form	AQC0296
Aqc0296 Anti Idealization As Portraiture Philosophy	AQC0296
Aqc0296 Digital Image Documentation Aqc0296_Img_Full_1024X1024_Webp	AQC0296
Aqc0332 Physical Specifications	AQC0332
Aqc0332 Wood Grain Simulation Through Print Orientation	AQC0332
Aqc0332 Material Paradox As Character Embodiment	AQC0332
Aqc0332 Digital Image Documentation Aqc0332_Img_Full_1024X1024_Webp	AQC0332
Aqc0335 Physical Specifications	AQC0335
Aqc0335 Pythagorean Number Theory As Geometric Transliteration	AQC0335
Aqc0335 3D Printing Wood Pla For Philosophical Symbolism	AQC0335
Aqc0335 Digital Image Documentation Aqc0335_Img_Full_1024X1024_Webp	AQC0335
Aqc0336 Physical Specifications	AQC0336
Aqc0336 Ideamorphic Translation Of Folklore Through Material	AQC0336
Aqc0336 Cubist Abstraction As Codex For Supernatural Subjects	AQC0336
Aqc0336 Wood Pla As Medium For Folkloric Materiality	AQC0336
Aqc0336 Digital Image Documentation Aqc0336_Img_Full_1024X1024_Webp	AQC0336
Aqc0337 Physical Specifications	AQC0337
Aqc0337 Self Interrogating Form The Ontological Loop	AQC0337
Aqc0337 Thrownness And Situatedness Being In The World	AQC0337
Aqc0337 Temporal Ekstasis Form As Becoming	AQC0337
Aqc0337 Advanced Research In 3D Printed Wood Pla Sculpture Scale And	AQC0337
Aqc0337 Digital Image Documentation Aqc0337_Img_Full_1024X1024_Webp	AQC0337

Aqc0340 Digital Image Documentation Aqc0340_Img_Full_2915X3887_Webp	AQC0340
Aqc0340 Physical Specifications	AQC0340
Aqc0340 Computational Image Analysis Aqc0340	AQC0340
Aqc0377 Ephemeral Portraiture As Tidal Performance	AQC0377
Aqc0377 Solar Symbolism In Geometric Figuration	AQC0377
Aqc0377 Digital Image Documentation Aqc0377_Img_Full_1024X1024_Webp	AQC0377
Aqc0377 Computational Image Analysis Aqc0377	AQC0377
Physical Specifications	AQC0377
Aqc0378 Ephemeral Jazz Tribute Through Sand Sculpture	AQC0378
Aqc0378 Geometric Abstraction Of Bird Identity	AQC0378
Aqc0378 Digital Image Documentation Aqc0378_Img_Full_1024X1024_Webp	AQC0378
Physical Specifications	AQC0378
Aqc0379 Geometric Ambiguity Face Sails Journey	AQC0379
Aqc0379 Ephemeral Medium As Deliberate Choice	AQC0379
Aqc0379 Documentation As Emission Ideamorphic Questions	AQC0379
Aqc0379 Digital Image Documentation Aqc0379_Img_Full_2226X3116_Webp	AQC0379
Physical Specifications	AQC0379
Aqc0380 Ideamorphic Geometric Translation Of Reading Figure	AQC0380
Aqc0380 Sand As Enactment Of Readings Ephemerality	AQC0380
Aqc0380 Digital Image Documentation Aqc0380_Img_Full_1536X2048_Webp	AQC0380
Physical Specifications	AQC0380
Aqc0381 Monumental Ephemerality Paradox As Artistic Strategy	AQC0381
Aqc0381 Monks Angularity Translated To Geometric Relief	AQC0381
Aqc0381 Digital Image Documentation Aqc0381_Img_Full_828X1104_Webp	AQC0381
Physical Specifications	AQC0381
Aqc0384 Physical Specifications	AQC0384
Aqc0384 Digital Image Documentation Aqc0384_Img_Full_2663X3787_Webp	AQC0384
Aqc0386 Physical Specifications	AQC0386
Aqc0386 Digital Image Documentation Aqc0386_Img_Full_1429X1905_Webp	AQC0386
Aqc0387 Physical Specifications	AQC0387
Aqc0387 Digital Image Documentation Aqc0387_Img_Full_1536X2048_Webp	AQC0387
Aqc0389 Physical Specifications	AQC0389
Aqc0389 Digital Image Documentation Aqc0389_Img_Full_1475X984_Webp	AQC0389
Aqc0390 Physical Specifications	AQC0390
Aqc0390 Digital Image Documentation Aqc0390_Img_Full_1536X2048_Webp	AQC0390
Aqc0390 Computational Image Analysis Aqc0390	AQC0390
Aqc0391 Physical Specifications	AQC0391
Aqc0391 Digital Image Documentation Aqc0391_Img_Full_2747X3854_Webp	AQC0391
Aqc0392 Physical Specifications	AQC0392
Aqc0392 Digital Image Documentation Aqc0392_Img_Full_1536X2048_Webp	AQC0392
Aqc0413 Physical Specifications	AQC0413
Aqc0413 Digital Image Documentation Aqc0413_Img_Full_1536X2048_Webp	AQC0413
Aqc0415 Physical Specifications	AQC0415
Aqc0415 Digital Image Documentation Aqc0415_Img_Full_1536X2048_Webp	AQC0415
Aqc0418 Physical Specifications	AQC0418
Aqc0418 Digital Image Documentation Aqc0418_Img_Full_1364X2048_Webp	AQC0418
Aqc0420 Digital Image Documentation Aqc0420_Img_Full_1536X2048_Webp	AQC0420
Aqc0420 Physical Specifications	AQC0420

Aqc0420 Computational Image Analysis Aqc0420	AQC0420
Aqc0426 Digital Image Documentation Aqc0426_Img_Full_1492X2048_Webp	AQC0426
Aqc0426 Physical Specifications	AQC0426
Aqc0426 Computational Image Analysis Aqc0426	AQC0426
Aqc0427 Digital Image Documentation Aqc0427_Img_Full_1536X2048_Webp	AQC0427
Aqc0427 Physical Specifications	AQC0427
Aqc0427 Computational Image Analysis Aqc0427	AQC0427
Aqc0432 Physical Specifications	AQC0432
Aqc0432 Digital Image Documentation Aqc0432_Img_Full_1536X2048_Webp	AQC0432
Aqc0433 Sir John Falstaff As Visual Character Study Contradiction Ex	AQC0433
Computational Image Analysis - AQC0433	AQC0433
Digital Image Documentation - aqc0433_img_full_1536x2048_webp	AQC0433
Physical Specifications	AQC0433
Aqc0442 Physical Specifications	AQC0442
Aqc0442 Digital Image Documentation Aqc0442_Img_Full_1536X2048_Webp	AQC0442
Aqc0443 Digital Image Documentation Aqc0443_Img_Full_1536X2048_Webp	AQC0443
Aqc0443 Physical Specifications	AQC0443
Aqc0443 Computational Image Analysis Aqc0443	AQC0443
Computational Image Analysis - AQC0444	AQC0444
Digital Image Documentation - aqc0444_img_full_1536x2048_webp	AQC0444
Physical Specifications	AQC0444
Aqc0447 Narrative Origin And Thematic Intent	AQC0447
Aqc0447 Material Translation Of Narrative	AQC0447
Digital Image Documentation - aqc0447_img_full_2500x2500_webp	AQC0447
Physical Specifications	AQC0447
Aqc0458 Origin Point Of The Ariel Series	AQC0458
Digital Image Documentation - aqc0458_img_full_2053x2737_webp	AQC0458
Physical Specifications	AQC0458
Aqc0460 Transliterating Urban Feline Symbiosis Through Form	AQC0460
Aqc0460 Daring Verticality And Material Risk In Ceramic Construction	AQC0460
Digital Image Documentation - aqc0460_img_full_526x701_webp	AQC0460
Physical Specifications	AQC0460
Aqc0461 Physical Specifications	AQC0461
Aqc0461 Digital Image Documentation Aqc0461_Img_Full_3024X4032_Webp	AQC0461
Aqc0465 Material Evolution From Hybrid To Elemental Bondage	AQC0465
Aqc0465 Cubist Fragmentation As Spirit Dispersal	AQC0465
Digital Image Documentation - aqc0465_img_full_2500x2500_webp	AQC0465
Physical Specifications	AQC0465
Computational Image Analysis - AQC0473	AQC0473
Digital Image Documentation - aqc0473_img_full_526x701_webp	AQC0473
Physical Specifications	AQC0473
Aqc0475 Physical Specifications	AQC0475
Aqc0475 Digital Image Documentation Aqc0475_Img_Full_526X701_Webp	AQC0475
Aqc0477 Digital Image Documentation Aqc0477_Img_Full_526X701_Webp	AQC0477
Aqc0477 Physical Specifications	AQC0477
Aqc0477 Computational Image Analysis Aqc0477	AQC0477
Aqc0478 Digital Image Documentation Aqc0478_Img_Full_1536X2048_Webp	AQC0478
Aqc0478 Physical Specifications	AQC0478

Aqc0478 Computational Image Analysis Aqc0478	AQC0478
Aqc0484 Physical Specifications	AQC0484
Aqc0484 Digital Image Documentation Aqc0484_Img_Full_1366X2048_Webp	AQC0484
Aqc0485 Sculptural Integration Of Alchemical Symbolism	AQC0485
Aqc0485 Material And Technical Execution	AQC0485
Aqc0485 Digital Image Documentation Aqc0485_Img_Full_526X701_Webp	AQC0485
Physical Specifications	AQC0485
Aqc0504 Digital Image Documentation Aqc0504_Img_Full_1516X2048_Webp	AQC0504
Aqc0504 Physical Specifications	AQC0504
Aqc0504 Computational Image Analysis Aqc0504	AQC0504
Aqc0506 Polystyrene Layering As Dimensional Substrate	AQC0506
Aqc0506 Artemis As Geometric Triad	AQC0506
Digital Image Documentation - aqc0506_img_full_2500x2500_webp	AQC0506
Physical Specifications	AQC0506
Aqc0507 First Sculpture Text Diptych With Narrative Misdirection Mec	AQC0507
Digital Image Documentation - aqc0507_img_full_1935x2903_webp	AQC0507
Physical Specifications	AQC0507
Aqc0509 Digital Image Documentation Aqc0509_Img_Full_1366X2048_Webp	AQC0509
Aqc0509 Physical Specifications	AQC0509
Aqc0509 Computational Image Analysis Aqc0509	AQC0509
Aqc0511 Digital Image Documentation Aqc0511_Img_Full_1364X2048_Webp	AQC0511
Aqc0511 Physical Specifications	AQC0511
Aqc0511 Computational Image Analysis Aqc0511	AQC0511
Aqc0514 Playful Cubist Appropriation Of Archimedes Character	AQC0514
Aqc0514 Ceramic Structural And Surface Methodology For Complex Forms	AQC0514
Computational Image Analysis - AQC0514	AQC0514
Digital Image Documentation - aqc0514_img_full_1638x2048_webp	AQC0514
Physical Specifications	AQC0514
Aqc0517 Digital Image Documentation Aqc0517_Img_Full_1440X1636_Webp	AQC0517
Aqc0517 Physical Specifications	AQC0517
Aqc0517 Computational Image Analysis Aqc0517	AQC0517
Aqc0519 Digital Image Documentation Aqc0519_Img_Full_2608X3795_Webp	AQC0519
Aqc0519 Physical Specifications	AQC0519
Aqc0519 Computational Image Analysis Aqc0519	AQC0519
Aqc0563 Cubist Deconstruction Of An Animal Subject	AQC0563
Aqc0563 Deconstructing The Masters Dog Play And Affection As Creativ	AQC0563
Aqc0563 Collection Positioning Gus Within Untamed Creations	AQC0563
Digital Image Documentation - aqc0563_img_full_1152x2048_webp	AQC0563
Physical Specifications	AQC0563
Aqc0567 Digital Image Documentation Aqc0567_Img_Full_1536X2048_Webp	AQC0567
Aqc0567 Computational Image Analysis Aqc0567	AQC0567
Aqc0567 A Tribute To Charlie Parker And The 1952 Jam Session	AQC0567
Aqc0567 Visual Fusion Of Bird And Instrument	AQC0567
Aqc0567 Untamed Creations Free Expression Beyond Systematic Translit	AQC0567
Physical Specifications	AQC0567
Aqc0571 Grimoire As Ideamorphic Subject	AQC0571
Aqc0571 Geometric Forms As Spell Formulae And Ascending Composition	AQC0571
Aqc0571 Internal Metal Armature For Structural Engineering	AQC0571

Aqc0571 Rhodium Enamel Surface	AQC0571
Digital Image Documentation - aqc0571_img_full_3024x3024_webp	AQC0571
Physical Specifications	AQC0571
Aqc0572 Geometric Reduction Cat Form Through Cubist And Minimalist S	AQC0572
Aqc0572 Ancestral Ceramic Techniques Traditional Materials And Minim	AQC0572
Digital Image Documentation - aqc0572_img_full_2686x4029_webp	AQC0572
Physical Specifications	AQC0572
Aqc0578 Ideamorphic Translation Bebop Harmonic Complexity Geometric	AQC0578
Aqc0578 Symbolic Fusion Bird Saxophone In Cubist Form	AQC0578
Aqc0578 Technical Construction Internal Chimney Architecture	AQC0578
Aqc0578 Material Fabrication Terre Blanche Chamotte Beeswax	AQC0578
Aqc0578 Personal Tribute Bebop As Formative Devotion	AQC0578
Digital Image Documentation - aqc0578_img_full_2487x3731_webp	AQC0578
Physical Specifications	AQC0578
Aqc0581 Archaic Invocation Through Geometric Reduction Within A Scul	AQC0581
Aqc0581 Post Firing Surface Transformation Through Hand Sanding	AQC0581
Aqc0581 Ideamorphic Emission Through Sculptural Incompleteness	AQC0581
Digital Image Documentation - aqc0581_img_full_3024x4032_webp	AQC0581
Physical Specifications	AQC0581
Aqc0582 The Merging Of Reader And Text	AQC0582
Aqc0582 Ideamorphism At The Point Of Reception	AQC0582
Aqc0582 Formal Ambiguity As Conceptual Method	AQC0582
Aqc0582 Material Reduction And The Interiority Of Reading	AQC0582
Digital Image Documentation - aqc0582_img_full_1773x2363_webp	AQC0582
Physical Specifications	AQC0582
Digital Image Documentation - aqc0657_img_full_1920x2560_webp	AQC0657
Physical Specifications	AQC0657
Digital Image Documentation - aqc0658_img_full_1582x2373_webp	AQC0658
Physical Specifications	AQC0658
Digital Image Documentation - aqc0659_img_full_2500x2500_webp	AQC0659
Physical Specifications	AQC0659
Digital Image Documentation - aqc0660_img_full_1581x2371_webp	AQC0660
Physical Specifications	AQC0660
Aqc0709 Symbolizing Wildness In The City	AQC0709
Aqc0709 The Paradox Of Stillness In Flight	AQC0709
Aqc0709 Steel As Material Resonance	AQC0709
Aqc0709 The Sculpture As Territorial Gesture	AQC0709
Digital Image Documentation - aqc0709_img_full_2000x2500_webp	AQC0709
Physical Specifications	AQC0709
Aqc0972 The Relay Naming A Gap In The Transmission Model	AQC0972
Aqc0972 Illustration Or Embodiment A Question The Series Carries	AQC0972
Digital Image Documentation - aqc0972_img_full_3999x4999_webp	AQC0972
Physical Specifications	AQC0972
Aqc0973 The Spiral Opening As Generative Loss A Trial Reading	AQC0973
Aqc0973 Motion After Diffraction Does The Idea Survive The Crossing	AQC0973
Digital Image Documentation - aqc0973_img_full_3799x5699_webp	AQC0973
Physical Specifications	AQC0973

© 2026 Arnaud Quercy

Publié par: Art Quam Anima Publishing New York LLC

AQA PUBLISHING LLC

c/o Northwest Registered Agent, 418 Broadway, Ste N

Albany, New York, 12207

+1 917-764-5470

publishing.artquamanima.com

Première publication: 2026-04-09 · Dernière mise à jour: 2026-04-09

URI persistante: <https://publishing.artquamanima.com/fr/catalogues/2026/03/sculpture-20g9.pdf>